

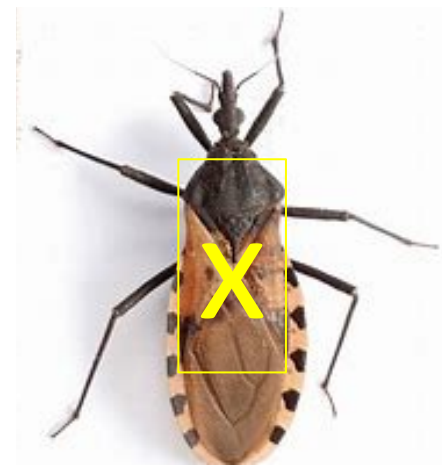


# Little Ladies

Did you know that ladybugs are not bugs; ladybugs are beetles! They are Ladybird Beetles. Beetles are 40% of all insects and 25% of all living things. Beetles have hard forewings called elytra which protect the hindwings, so that a line appears along the back. Bug wings look like a V or X. Beetles have chewing mouthparts and eat plants and animals. Bugs have piercing-sucking mouthparts and drink fluids such as nectar. Beetles have complete metamorphosis with 4 stages and bugs have incomplete metamorphosis with 3 stages.



For beetles you will see a line where the wings fold; for bugs you will see an x and both hard and membranous wings.



Ladybugs, or Ladybird beetles, are beetles. Beetles have two pairs of wings—one hard pair to protect the thorax, and one pair for flying. Ladybugs are male and female. They help farmers and gardeners by eating harmful insects. Ladybugs are not all red and do not all have spots; the color warns predators not to eat them because they have a bad taste. Ladybugs taste and smell with their antennae. Ladybugs develop from eggs to larvae, pupae, and then into adults. The larvae molt. The wings on the ladybug must first dry and harden. Lady bugs have a *pronotum* to protect the thorax. You can sing *Ladybug With Those Spots* and *Ladybugs Fly*.



# Beetle songs

Ladybug, with those dots (pointing finger)  
Shiny hard wings and black spots. (flapping  
hands at shoulders)  
Shiny hard wings closed tight on the outside,  
(hands on top of each other)  
but when you're flying (hands flapping)  
Open wide! (arms out)

Tune—*This Old Man*



---

Ladybugs fly (hands flying around)  
Flying so high. (hands flying around)  
Flying here, (hands flying right)  
Flying there, (hands flying left)  
Flying low and high and everywhere. (hands flying up and down)  
Looking around with great care (hands flying in a circle),  
while ladybugs fly, while ladybugs fly.

You can sing this song to *Three Blind Mice*



How many ladybugs can you find?

- Cut out the ladybug pictures and hide them around the house.
- Count how many ladybugs you found.
- You can also sort lady bugs by color:



You can count ladybugs!





You can be finger beetles!

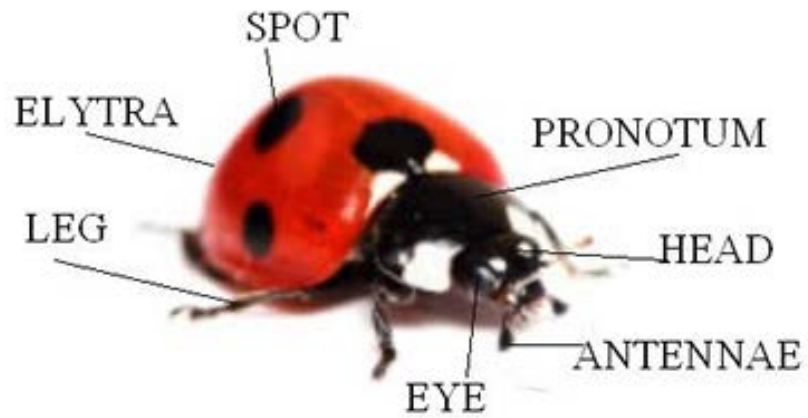
Ladybug, ladybug

Wings two pair (2 fingers)

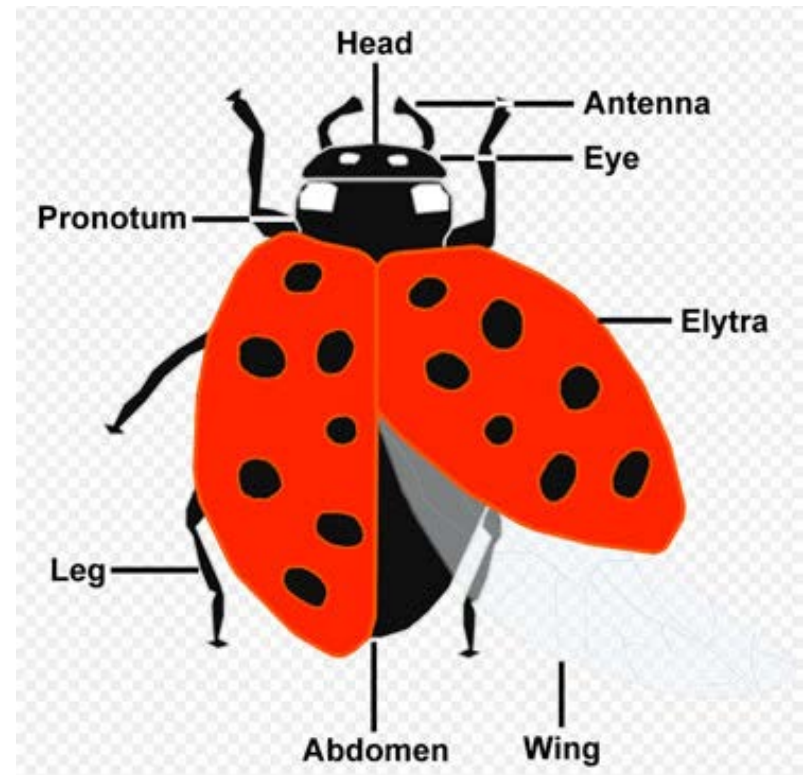
One to protect, (hug)

One fly through the air! (hands up)





Ladybug anatomy





There are around 350,000 species of beetles including ladybirds, ground beetles, long-nosed weevils, scarabs and fireflies. Ladybugs, or ladybird beetles, come in many colors and patterns.

---



# Spots and Dots

You can read a  
story.



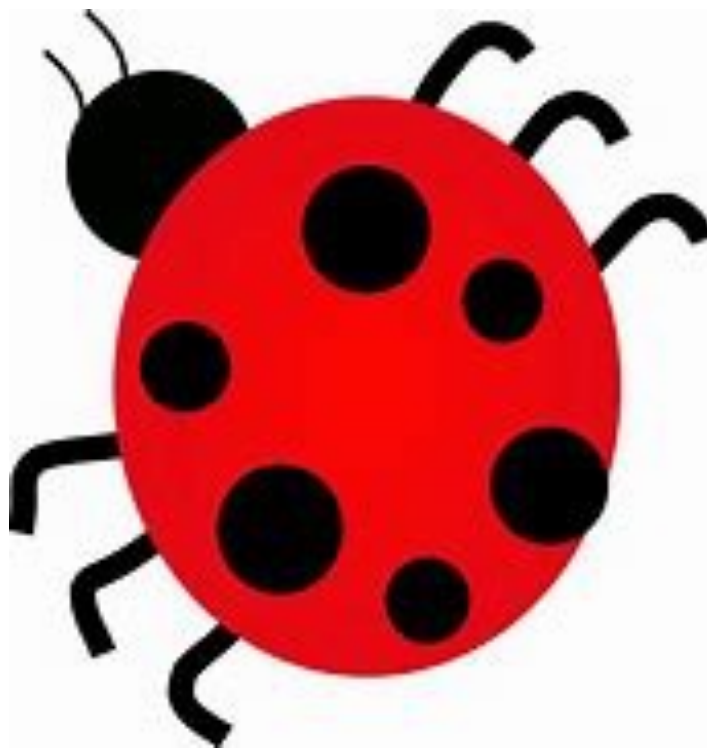
The ladybug flies round the yard.



Her outer wings are nice  
and hard.



Her color's red, she has some  
dots



She's searching for some dining spots!





# Take a beetle walk.....

Did you find beetles on leaves, twigs, grass?





You can be a Beetle Treasure Hunter!

Cut out the beetles and have someone hide them around the house.



Make a beetle collecting bag.

Then go on a beetle treasure hunt!



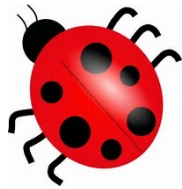
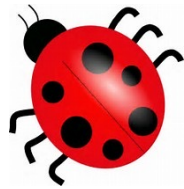
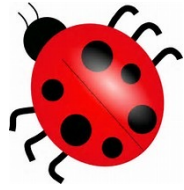
# Beetle Treasure Hunt Bag

Get a bag or envelope and cut out the beetle and net pictures.

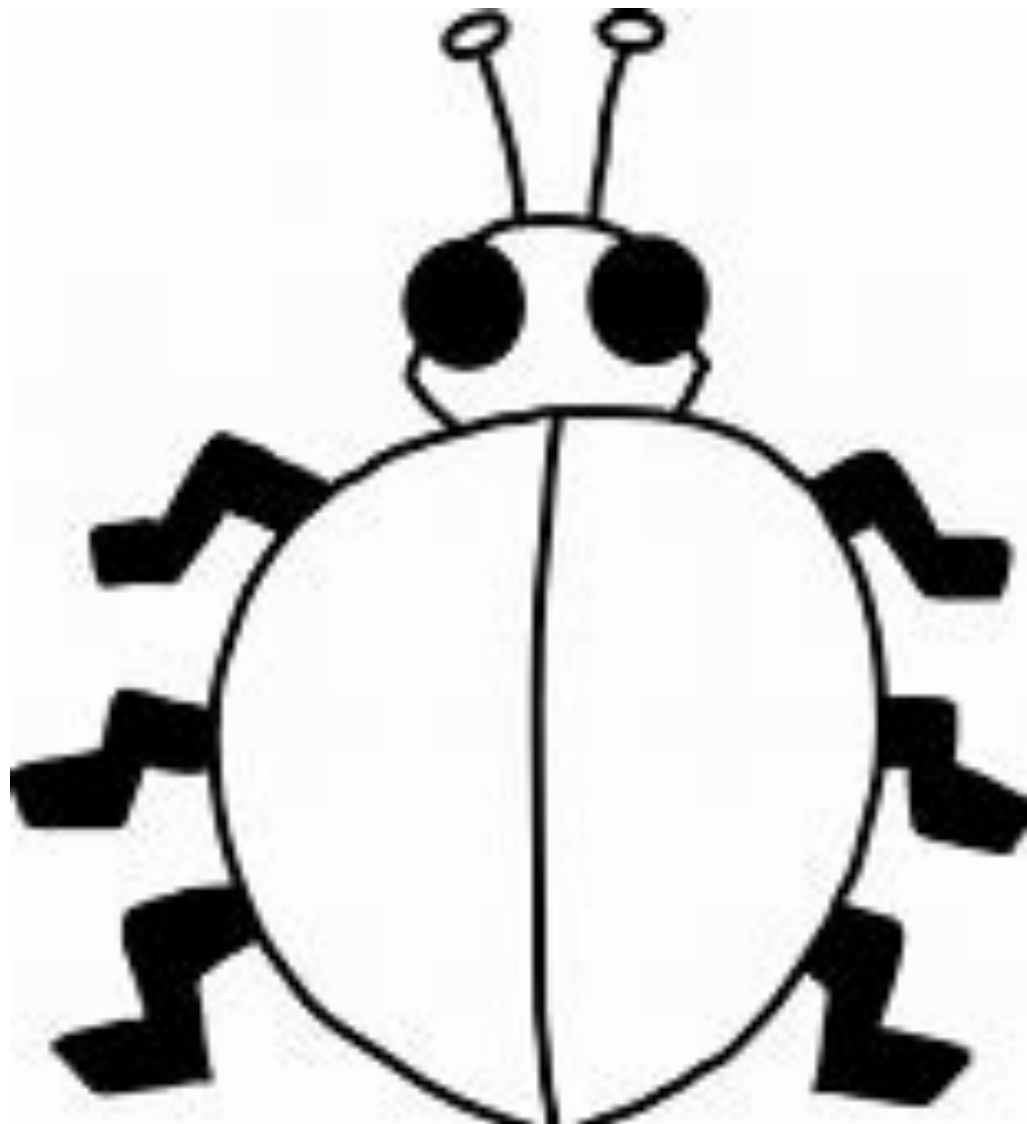
Glue the net and beetle on the bag and decorate the bag for the Beetle Treasure Hunt Game!



You can find beetles on the Beetle Treasure Hunt!

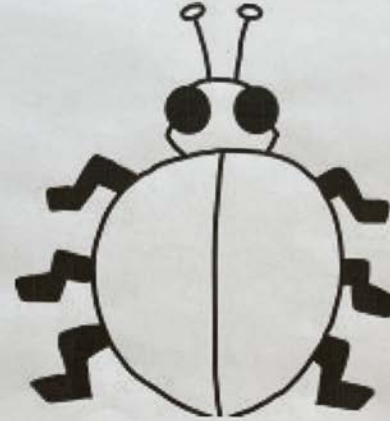


You can be a beetle engineer and design your own beetle—choose a color and pattern.



Ladybird  
beetles  
come in  
different  
colors and  
patterns.

You can be a beetle engineer and design your own beetle—choose a color and pattern.



You can be a beetle engineer and design your own beetle—choose a color and pattern.



# What other ways can you make beetles?

Paper cups or plates?



# You can be a beetle chef!

What can you use for the head?



What can you use for the wings?

What can you use for the legs and antennae?

What can you use for the eyes and dots?





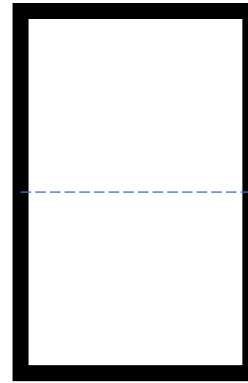
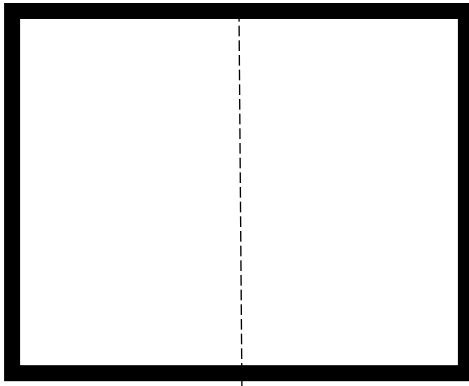
# What's on the menu?

Gourmet ladybird beetles!



# You can make a mini-book!

- Fold the paper in half
- Then in half again.





Beetle Bop has internal rhyming. The Beetle Alphabet Book is another example of alphabet structure.

<https://www.youtube.com/watch?v=kpqIOHMKu8A>

[https://www.youtube.com/watch?v=oVIPtT\\_3dA8](https://www.youtube.com/watch?v=oVIPtT_3dA8)

