

# Newsletter Elm Fork Chapter



These boots made for walking? For whom? Read between the lines as you browse the newsletter!




Volume 12, Issue 11

November 2011

*Special points of interest:*

- D. Wetherbee has a winner
- Birds of prey
- Projects at LLELA
- Nature hikes are in style
- Finding the frogs
- Can you solve the boot mystery?
- Looks who's back in town—and it's not Lulu!
- Bugs, bugs, everywhere bugs
- Honor the veterans month

*Inside this issue:*

November speaker	2
Field Notes in Focus	3
Notices	4
LLELA/LAERF river restoration	7
City nature hikes	10
What's new from Ron Fellows	11
Like insects? Become a specialist	12
LLELA partners with local MN chapters, Dr Pepper & UNT	14
12th Annual Conference report	15
Mystery boots?  Look for me!	
Who we are	17

How well do *you* know your fellow Master Naturalists? One of our Elm Fork Chapter Members walks in these boots ... do you know who it is? Here are your clues: In their thirty years of life, these boots have seen action in: Korea, Panama, England, Spain, Greece, The Azores, Japan, The Philippines, many states scattered across America, the Oregon Trail and even East Texas!

Picture and puzzle—courtesy of  
Judi & Van Elliott

**Doris Mager brings her program for meeting—November 17, 2011**

From Susan Pohlen

Do you have a love for the magnificent birds of prey that share our world? Then join us at the November chapter meeting to hear Doris Mager share her knowledge and insight for birds of prey. Doris returns to North Texas along with her Great Horned Owl, Crested Caracara, Screech Owl, and an American Kestrel, and she has accepted our invitation to speak to the chapter on November 17th.



Doris began working with birds of prey in 1963, and with eagles in 1968. She started the non-profit organization Save Our American Raptors (S.O.A.R.) in 1983, and has been in every state providing educational programs on raptors.

Doris has over 40 years of experience with raptors. According to Helen Malina, coordinating editor of *RJ: Tribute to a Golden Eagle*, "Her eagle work has included rescue, rehabilitation, release to the wild, training, banding, surveying, transporting, hand raising, classroom education, National lecture tours, as well as unusual promotion and fundraising activities-involving living in an eagles nest, taking a 200 mile walk, and touring across America on a bicycle."

Doris has been on numerous talk shows, TV interviews and documentaries, and has been documented in many popular magazines. She is the Author of, *RJ: Tribute to a Golden Eagle*, a touching true story of her loving relationship with her Golden Eagle RJ.



Doris is the recipient of many awards including: Conservation Educator of the Year from the National Wildlife Federation, The Allan D. Cruickshank Award, The Eagle Person of the Year Award, and many more.



You would never guess that Doris has had so many accomplishments. She is a quiet, modest, gentle lady who lives and sleeps in her van with her raptors as she travels across the states, and she's still going strong at age 86!

Of course we hope you can all make the November chapter meeting, but if not you can still see Doris at Ray Roberts Lake State Park: Isle du Bois Branch Friday night at 6 and Saturday morning at 10:00, November 18<sup>th</sup> & 19<sup>th</sup> respectively, and at Johnson Branch Saturday afternoon at 1:00.

**Don't Miss December Issue:**

- \* 12th Annual Conference coverage cont'd (Jan Deatherage)
- \* Photos—Class of 2011 in training (Judi & Van Elliott)
- \* Photos—Revamping of garden at Isle du Bois, Lake Ray Roberts (Doug Chadwick)
- \* Elm Fork Education Center (Peg LaPoint)

## FIELD NOTES IN FOCUS



Spectacular photos of female marlins — come courtesy of **Jan Hodson**

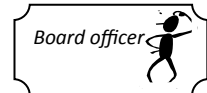
The last couple of weeks has seen the return of our winter visitors, juncos, yellow rumped warblers, and large flocks of robins, are now vacationing at my water features.

Ken Agee (a friend and coworker of my husband) caught this visiting female merlin on camera at Hagerman last weekend.

The Merlin is a member of the falcon family. According to Peterson it is a little larger than a kestrel at 10 inches and uncommon.



NOTICES



**Reporting AT & Service Hours.** Ten months have passed and we are closing in on the end of 2011. It's hard to believe sometimes. Thanks to all those members who have kept up reporting your hours on a regular basis. For those of you who are behind, please make a concerted effort to get caught up by the November meeting. If you can't get to the meetings or to the office to turn in your hours, please fax the forms to Donna, 940-3492881 or scan them into pdf files and email them to Rob Roy at [robt\\_t\\_roy@msn.com](mailto:robt_t_roy@msn.com), copy Donna at [don-na.wolfe@dentoncounty.com](mailto:don-na.wolfe@dentoncounty.com). We really need to be as current as possible in November then close the year with great numbers reported for the rest of the year.

Thanks,  
Rob Roy  
214-668-3233

**TAKE NOTE:** We inventory the resource rooms in January. Please return any items you have checked out to the resource by the end of the year.

If you have any items to donate now is the time, so it can be included in the inventory. If you need a tax receipt for your donation contact me.

Some items we can use in the resource room:

- Hair dryer
- blender
- field guide books
- kids craft supplies
- wire hangers

I have plenty of TP rolls, wax cartons, egg cartons, and plastic containers you can recycle these items. Please remember to reserve items on the calendars in the resource rooms. And, sign items in and out on the check out list, if you are taking them from the building. If you need something for a booth or program let me know as soon as possible and I will help put together what you need.

Happy Holidays,  
Jan Hodson

**Save the date for Holiday Meeting and Party**  
December 15, 2011  
9:00 a.m. to 1:00 p.m.  
Potluck and Gift Exchange  
Extension office conference room

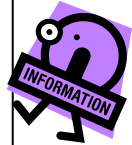




### Work Day at Clear Creek Heritage Center

It's a long road from Indiana, but look who's back in town—Elm Fork Chapter's very own, **Jan Thompson**, to announce a workday to finish up the kiosk on Wednesday, November 16, 9:30 a.m. She states that she has some "wood critters" that will be applied to the supports of the kiosk to make it more attractive and fun looking. A day for follow-up is scheduled for Saturday, November 19—if needed. Should you have questions, or just want to talk to Jan:

**972/757-5715 (c)**



**C**ongratulations to the Elm Fork Chapter of the Master Naturalist and to the many Master Naturalist volunteers at LLELA, in particular, for winning the third place exemplary project award in the statewide contest. The award was received at the state meeting this past weekend.

This award is a result of the thousands of hours of service the Elm Fork Chapter, with assistance from the Blackland Prairie and North Texas chapters, provided to LLELA each year. One acre of prairie, wetlands, and bottomlands restoration, one foot of trail, and one child at a time, we are having an impact on creating a showplace project for the Master Naturalists. More importantly, we are helping to introduce to the people of the metroplex an outdoors experience that showcases what our area of Texas once looked like, and providing them with a chance to reconnect to nature right here in our own backyards.

My heartfelt thanks to all of you who have volunteered at LLELA. You truly deserve this recognition!

Diane Wetherbee  
Project Manager

Oh dear Ms Diane....GREAT BIG CONGRATS to you. You've done a magnificent job and deserve every ounce of recognition. Here's my ounce! I'm so thrilled to hear of the award, but think (selfishly) that your project should have won first place. Congrats to you, dear one!...Big hugs t'boot! Dor...

**We couldn't have said it better!**



*My heart found its home long ago in the beauty, mystery, order and disorder of the flowering earth.—Lady Bird Johnson*

**REQUEST FOR EFCMN PROJECT MANAGER AT LISDOLA**

Lewisville Independent School District Outdoor Learning Area [LISDOLA] is now under the leadership of Suzanne Barnard, and she is taking the program in a different direction, one more aligned with the Master Naturalist mission. She has heard about our good work [LLELA /LAERF] and is requesting Elm Fork Chapter Master Naturalists' assistance. To reinstate LISDOLA as an approved EFCMN project, we need a certified MN from our chapter to accept the responsibility of project manager.

Lewisville Independent School District [LISD] is huge and covers a lot of Denton County. They are asking for our help to bring this nature and conservation program back into focus in that school district. If you have an interest in helping us with this project please contact:

Susan Pohlen, Project Committee Chair,  
[spohlen@verizon.net](mailto:spohlen@verizon.net) / 940-686-5739

Van or Judi Elliott - Training Committee, [velliott-t2105@msn.com](mailto:velliott-t2105@msn.com) / 972-539-4350

## NOTICES cont'd

WANTED!

WANTED!

## Photos for Scrapbook

**Betty Zajac** is urgently asking for project photos for the 2011 Chapter scrapbook. Please get them to her by, or before, the December meeting.

WANTED!

EAZ805@aol.com

## \*Upcoming Hikes led by Ray Chancellor:

[RayChancellor@aol.com](mailto:RayChancellor@aol.com)

Saturday, October 22 North Walnut Grove Trail at 8:30 a.m.

Wednesday, October 26 Quail Creek Trail At 8:30 a.m.

Sunday, October 30 North Walnut Grove Trail/Bob Jones Nature Center

Saturday, November 12 Bob Jones Park Trail at 8:30 a.m.

Wednesday, November 16 North Walnut Grove Trail at 8:30 a.m.

Saturday, December 10 North Walnut Grove Trail at 8:30 a.m. Fort Worth Audubon Society (This is scheduled for the Fort Worth Audubon Society, but is also open to all our members. We will probably cover both the North Walnut Grove Trail and the Bob Jones Nature Center.)

\*3 opportunities  
from Peg LaPointe

## \*Join Project FeederWatch to Make Your Bird Watching Count

The 25th season of Project FeederWatch begins November 12, although you can sign up at any time. FeederWatchers keep track of the birds they see throughout the winter and report their tallies regularly; as often as once each week. These data help scientists to track changes in winter bird populations from year to year. To learn more and to sign up, visit [www.feederwatch.org](http://www.feederwatch.org). New participants receive a kit with a handbook, a bird-identification poster, calendar, and instruction booklet. There is a small fee (reduced for Lab members) to help cover the costs of materials and participant support. [www.feederwatch.org](http://www.feederwatch.org)

## \*Save the dates for the next GBBC!

The next Great Backyard Bird Count (GBBC) takes place Friday, February 17, through Monday, February 20, 2012. We're looking forward to it and we hope you are too! The National Audubon Society and the Cornell Lab of Ornithology, with Canadian partner Bird Studies Canada will keep you informed of all the latest developments as the big event gets closer.

During this February's GBBC, participants submitted more than 92,000 online checklists and identified nearly 600 distinct species.

[www.birds.cornell.edu](http://www.birds.cornell.edu)

## CONTACT INFORMATION CHANGES

If you have any changes in your contact information (name, address, telephone number or numbers, and/or email address) you want the chapter and members to know about please send the changes to :

**Monica Chaffin** [chaffincasa@gmail.com](mailto:chaffincasa@gmail.com); **Donna Wolfe** [donna.wolfe@dentoncounty.com](mailto:donna.wolfe@dentoncounty.com); & **Rob Roy** [robt\\_t\\_roy@msn.com](mailto:robt_t_roy@msn.com).



From Judi and  
Van Elliott

## LLELA / LAERF RIVER RESTORATION PROJECT OCTOBER 15, 2011

**O**n Saturday, October 15, 2011 from 8 am-12 noon two Elm Fork Master Naturalists, Van Elliott, and Richard Johnson, plus 3 students from the 2011 class, Vin Merrill, Rosemary Carrizales and Faith Fielder, plus 4 employees from Lewisville Aquatic Ecosystem Research Facility (LAERF), 1 employee from Lewisville Lake Environmental Learning Area (LLELA) and 3 members of the Fort Worth Fly Fishers Club (FWFFC) planted emergent aquatics along the Elm Fork of the Trinity River below the outflow at LLELA. The project was part of a grant from Fort Worth Audubon Society and LAERF to improve the river ecosystem and attract more birds.



Overview cages 1-30

**L**ynde Dodd (LAERF) led the project and did an excellent job of providing plants, description documentation and inventory control for workers. Dr. Ken Steigman (LLELA) provided expertise in wildlife habitat and ornithological aspects of the program. Both LLELA and LAERF are approved Chapter projects of which we are very proud because they are making great strides in restoring the 2,200 acre ecosystem on the south side of the Lewisville Lake dam. Plus, both organizations support our chapter by helping with training classes, making projects available and anything we ask them to do to assist the EFCTMN.



**T**hirty (30) ring cages were constructed on site and installed to protect wild celery, tall burhead, Illinois pondweed and white water lily. Three Hundred (300) emergents [sprigs, bare root plants and mature potted plants] were randomly planted in a lagoon on the east side of the river away from where the ringed plants were installed. Richard Johnson will lead the follow-up of the plants' growth in November or December 2011. Van documented ring cage planting locations with a GPS, field log, and photos. His report, along with other technical documentation from LAERF, are key components of the program.

**M**arking the cages was done by a series of colored flags so they could be found from either the shore or the river. Attached is a list of the plants and the color code system used to identify what plants are where.



Van after fall-  
ing into water

**T**here were a few lighter moments during this great adventure too. The Corp of Engineers reduced the flow of the river to accommodate this planting expedition. The reduced flow caused most of the water to run out of the targeted lagoon where the plants were to be installed. This left a very muddy silt laden surface on which to walk and work. About 10 minutes into the operation Van fell in and was muddy from head to toe. Fortunately the GPS, camera and clip board were spared. What a surprise!

**S**hortly thereafter Richard Johnson took a similar fall and had the same wonderful experience. However Richard is a avid fly fisherman and was astute enough to wear his waders. Van wasn't so lucky. He couldn't keep his sneakers on because of the suction from the mud so he worked in his hiking socks. Nobody was spared Students Rosemary, Vin and Faith were also covered with mud. Later Richard and Van got a standing ovation when they arrived for the LLELA Volunteer Appreciation lunch in their mud covered attire. Blame Ken Steigman, Director of LLELA, for that, he asked they show up looking like that so folks could see what working volunteers look like. What a hoot!

ON THE JOB

Richard Johnson  
planting cages



Faith Fielder  
and Vin Merrill  
building cages



Lynde Dodd and  
Richard Johnson in  
the water after work  
is done

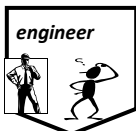


Vin Merrill and  
Rosemary Carrizales  
doing good work



Faith Fielder  
in the mud

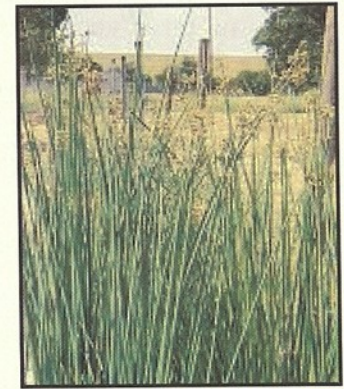
Photos from  
Van & Judi  
Elliott



**Fort Worth Audubon Society  
With the Lewisville Aquatic Ecosystem Research Facility  
Elm Fork of the Trinity River Planting  
Saturday October 15<sup>th</sup>, 2011**

**How to Plant Native Aquatic Plants**

Common name	Scientific name	Color
American bulrush	<i>Schoenoplectus americanus</i>	
Arrowhead	<i>Sagittaria latifolia</i>	
Bulltongue	<i>Sagittaria graminea</i>	
Creeping burhead	<i>Echinodorus cordifolius</i>	
Flatstem spikerush	<i>Eleocharis macrostachya</i>	
Giant bulrush	<i>Schoenoplectus californicus</i>	
Illinois pondweed	<i>Potamogeton illinoensis</i>	Blue/blk
Slender spikerush	<i>Eleocharis acicularis</i>	
Softstem bulrush	<i>Schoenoplectus tabernaemontani</i>	
Squarestem spikerush	<i>Eleocharis quadrangulata</i>	
Tall burhead	<i>Echinodorus berteroi</i>	Green/blk
Water smartweed	<i>Polygonum aquaticum</i>	
Water willow	<i>Justicia americana</i>	
American water lily (white)	<i>Nymphaea odorata</i>	Red/wht
Wild celery	<i>Vallisneria americana</i>	Pink



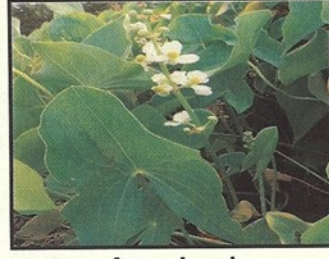
**Giant bulrush**



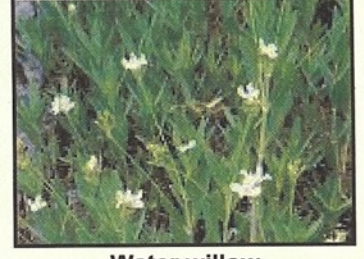
**Softstem bulrush**



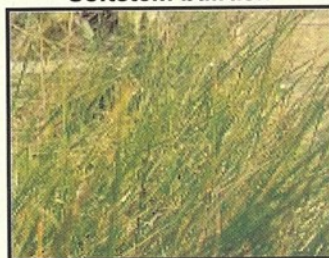
**American bulrush**



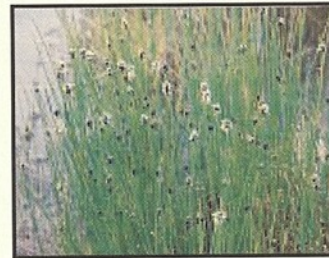
**Arrowhead**



**Water willow**



**Slender spikerush  
Stem is round**



**Flatstem spikerush  
Stem is flat**



**Squarestem spikerush  
Stem is square**



**Water smartweed**



**Creeping burhead**



**Tall burhead**



**Wild celery**



**Illinois pondweed**



## City Nature Hikes Committee Supports Bat World Program at Clear Creek Park

As a result of overflowing crowds attending the previous two annual Bat World Programs, our City Recreation Coordinator, Tracy Durmick, scheduled a double decker program this year. Yes, the Bat World Program, given by Dottie Hyatt, was presented twice on Saturday, October 22, 2011. Tracy estimated about 150 attendees at the morning session, and 125 attendees at the afternoon session. The weather was gorgeous and perfect for kids and parents to enjoy the events.

Master Gardeners provided a booth for making hands-on wildflower seed cards, and Master Naturalist City Nature Hikes Committee offered opportunities for three different hiking trails. Many attendees with young children, or those with baby strollers, chose to walk the prairie and visit the quarry at their own pace without a guide. However, our committee provided guides for the Rookery Trail and Quarry.

Combining the morning and afternoon MN-guided hikes, Alex Lieban, Cheryl Kesterson, Dave Rowley and I gave five hikes on the Rookery Trail to very enthusiastic young kids, mostly Girl Scout troops who were very interested, inquisitive, energetic, comprehending, polite and delightful. We guided a total of 98 hikers.

'Twas a gorgeous day and the hikes were exhilarating, not to mention Dave's group witnessing a copperhead snake in its trail. Was that a 'natural' happening? You bet. Nature at its best! Subtle reminder: don't wear flip-flops on a hike.

Dorothy Thetford, Project Leader

City Nature Hikes Committee

MN Project: 080313



Dave & Dorothy



Tracy & Dave



Dorothy & hikers



Tracy & Dorothy

Photos courtesy D. Thetford's "crew"

## What's New From Ron Fellows? A Pond of 'Smart' Frogs - There's an App for that!

My latest find is an app **Aurasma Lite** that does **Augmented Reality**. Now that I have you curious, here is the scoop.

The app employs the phone's camera to recognize images, symbols and objects in real life and link it to information using videos, animations, or 3D still images about that object.

I found a group of British school children that made stories about their school that could be played on smart phones by visitors. Go here: <http://www.porchester.notts.sch.uk/website/aurasma.html> to see their creativity. Go here: <http://www.aurasma.com/> to learn about Aurasma.

This is what was created for the Heritage school project. Joanne got out her scissors and glue and I gathered information and photos of Texas frogs and toads. The information gathering was not that hard. I found a wonderful young man in Illinois that was happy to share the vast information he had gathered about frogs and toads. His name is Dylan. Go to <http://www.herpingwithdylan.com> to see his wonderful collection.

While Joanne cut and glued frogs and toads to lily pads, I made videos about 14 frogs and toads of Texas. Now school children at Heritage Elementary can point their smart phones at the frog photos and videos start playing with lots of valuable information about the frog or toad in their natural habitat.



Got a school that you think might like a pond of 'smart' frogs. Ask me for a demo.

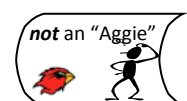
### What's Next?:

1. Heritage Elementary Tour of the "Texas Our Heritage": 10 eco-regions of Texas.

Point your smartphone at the interpretive signs for a short educational video about each region.

2. LLELA is interested in incorporating this technology into their new trail signs.

Ron Fellows





## LIKE INSECTS? BECOME A SPECIALIST!

Author — Susan Tartaglino

**In** the fall of every year, rotating between four areas of Texas, a five-day Entomology training class is held to give **Master Naturalists (MN)** and **Master Gardeners (MG)** the opportunity for intensive study of insects. It's officially called Master Volunteer Entomology Specialist Training. After completion of the course and an additional 8 (MN) or 15 (MG) hours of volunteer service, students are certified as MG/MN Entomology Specialists. The course also counts as 40 hours of Advanced Training.

**The** course was originally designed for MGs, and only for the last 2 years has it been open to MNs as well. The 2011 course was held from Monday, September 26th, through Friday, September 30th in north Dallas at the Dallas Research and Extension Center on Coit Road, just south of the George W. Bush Tollway. Overall coordinator Mike Merchant, PhD, BCE, did a splendid job.

**The** class size was limited to about 30 people. The cost of the course this year was \$350. This included all class instruction and literature, a collecting kit, lunches and snacks, one dinner, and transportation to field trip venues. About a dozen different speakers presented the classes and activities. Cost of the course doesn't include hotels (most students lived close enough to drive home each night), but Mike's assistant Kaye Garrison suggested nearby hotels and gave out names of those who wished to share, and helped with any other advance questions we might have.

**Because** much of our time would be spent outdoors, our suggested packing list included insect repellent, sunscreen, flashlight and comfortable clothing and shoes, along with a digital camera, if we had one.

**Classes** began at 1:00 p.m. on Monday with an introduction by Mike Merchant. We each briefly introduced ourselves. Most students came from Dallas and Tarrant counties and the immediate surroundings, but Martha Riccio of Palacios drove six hours from Matagorda County to attend. She'd missed last year's course in San Antonio and was determined to not miss the 2011 course, wherever it was held.

**Our** own Elm Fork Chapter was well represented by Diana Block, MG04, MN09; LaNae Colchin MN09; Janet Gershenfeld MG02, MN05; Joan Stanley MG94, MN05; and myself, Susan Tartaglino MN09.

**Our** classroom held several beautiful cases of properly pinned and labeled insects, reference books, microscopes, and lots of other Entomology paraphernalia. On Tuesday morning we received our collecting kits, packed in a WWII-style field bag. These included plastic collecting jars, a collapsible net, a pinning block, magnifying loupe, versaboard (styrofoam grooved block), aspirator for little bugs (called a "pooter"), ethyl acetate, pins and labels, and much more.

**The** course was a well-planned mix of classroom instruction, hands-on classroom time for pinning and identifying insects, and field trips. After our Tuesday classes on invasive insects, including invasive pest management and pesticide toxicology and landscape and ornamental pests, we departed for Connemara Meadow Conservatory for the afternoon and evening. Here we had a collecting demonstration, including had fun filling our collecting bottles and pooters. We also had a demonstration on collecting aquatic insects.

**Following** dinner, two light traps were set up for night collecting - white sheets with bright lights above them to attract night-flying insects. There were plenty of insects to go around! Some students weren't much interested in collecting but enjoyed watching, others filled their pooter and collecting jars. Collecting finished about 9:30 p.m., making for a very long but entertaining and educational day.

**On** Wednesday morning, Mike went over ideas for our Entomology projects, which must be completed within one year of the training. Ideas included collections utilized by others; presentations to schools, garden shows, civic groups, clubs; teaching other MG/MN's; youth programs; community butterfly gardens; teaching classes on building mason bee boxes; and much more. Project approval must come from the county chapter but reporting is done to Wizzie Brown.

**My** own projects will include a collection of "Butterflies of the Grasslands" to be donated to the Decatur Ranger station, which has a display of local wildlife and birds, but no insects as yet. The rest of the Wednesday morning was devoted to specimen preparation of our collection from the day before. The smallest insects (the pooter-bugs) usually have to be glued to one end of a tiny triangle; the pin goes through the other end. Microscopes were set up for close inspection of our insects, and a large selection of reference books was available along with lots of personal assistance. Some insects can't be pinned; large caterpillars, for example, have to be boiled for 15-30 seconds (preferably not while you are preparing dinner), then preserved in alcohol.

**With** well over one million species out there, identifying many insects means, in the beginning at least, getting just the order right, and maybe the family. To get beyond that means you may be counting the tiny hairs on each pair of legs or figuring out whether the antennae end in a tuft or a knob. (However, this isn't true of butterflies and moths, which have been well researched and for which excellent field guides are available.)

**After** lunch we left in vans for the Dallas Zoo, where we had a special tour of the Insect house, followed by a little time to view the nearby African Safari. Then on to Dale Clark's commercial butterfly-rearing operation, for myself the highlight of the course. Dale has extensive greenhouses and a wonderful array of butterfly plants, along with his own personal butterfly collection. We spent a few hours there and were allowed to collect butterflies if we wished - easier said than done for us beginners, even when they are perched on flowers like sitting ducks! Dale demonstrated how he ships the butterflies: he wraps the pupae in toilet paper and packs them gently inside a plastic cup. If we wished, we could join Mike and others in the group for dinner; on this night some of us went to Zanata's in Plano.

**Thursday** morning we had a class on photographing insects, then some time in the Community Gardens in back of the Extension Office for collecting and taking pictures, along with a certain amount of conflict between the two ("Hey, don't collect that bumble-bee till I've taken its photo.")

**Right** before lunch we had a talk from Janet Roe, beekeeper extraordinary, who brought along nine samples of honey for tasting. We were all supposed to taste and rate each sample and vote for our favorite one. Janet threw some clunkers into the mix, such as the sugar syrup that's fed to cattle during the winter months. If that one was my favorite, I'm not telling.

**After** lunch, a talk on forensic entomology, then Fire Ants, Argentine Ants and Crazy Ants by Wizzie Brown. The last two hours of the day were set aside for more specimen preparation and a slide show of students' photos. As always, we received plenty of individual attention on our pinning and labeling.

**Our** last day came all too soon. Friday, like Monday, was another half day, beginning with spiders - my own personal phobia, which I'm trying hard to overcome. Fortunately, we didn't have to handle any of the creepy things! Somehow being around people who were not only unafraid of spiders but actually interested in them made me comfortable with the presentation. We finished the morning with Urban Entomology and then filled out our course evaluations.

**My** main reservation before taking the course was that there would be too much emphasis on invasive insects and pest control, that is, information directed primarily to Master Gardeners and not to those of us interested in a general overview of the insect universe. As it turned out, about one quarter of our class time was spent on IPM (invasive pest management), which I felt was not excessive.

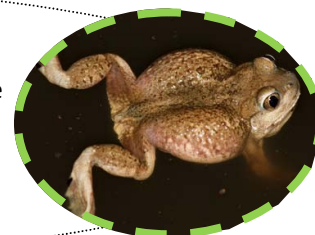
**Like** the Master Naturalist course itself, the Entomology Training is an overview of an enormous amount of information that needs to be followed up with further study, review, and use our new-found collecting/preparation skills.

**As** soon as I got back home from Entomology training, I was bitten by a small black beetle hiding under a pair of socks I'd left on the floor. Did I immediately squish it, or did I collect it, pin it, and ID it? I'll let you guess.

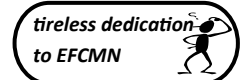


**Because I am unable to open Susan's photo files and her disc sent USPO was not delivered before newsletter deadline due to Veteran's Day holiday, photos will be featured in December newsletter!** *w. odum*

The New Mexico spadefoot toad was designated New Mexico's official state amphibian in 2003. The toad gets its name from the spade-like projections on its hind legs that enable the creature to dig in sandy soils. *American Profile*



*Public domain photo*



**PROJECTS: DR PEPPER/SNAPPLE AND MAKE A DIFFERENCE DAY (UNT) AT LLELA**

Photos & article  
from Owen Richards,  
Judi & Van Elliott

The weekend of October 28-29, 2011, was very busy for LLELA with two big events – **Dr Pepper/Snapple** on Friday and **Make a Difference Day** — sponsored by **UNT** on Saturday. The unique thing about these events was that there was participation from the three Master Naturalist chapters who have approved projects at LLELA: Blackland Prairie (1), Elm Fork (15) and North Texas (4). Five of the 20 Master Naturalist students worked both days. Planting native prairie grasses on the Blackland Prairie at LLELA was the focus of both projects.

The Dr Pepper/Snapple group planted 1,320 potted plants from 9 AM to 12 Noon that set a new record for the most planted in one day at LLELA. Additionally, there were between 35 and 40 employees involved in the project.

The UNT students (between 50 and 75) put about 950 potted plants in the ground during the same period on Saturday during Make a Difference Day.

**Aldo Leopold** would have been proud that we recognize the importance of restoring the land and having the active involvement of community and business groups.



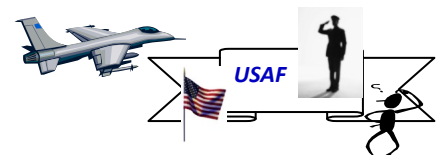
Ken Steigman (Director-LLELA); Christy Sas - NTCMN ;John Soto-NTCMN; Rosemary Carrizales-EFCMN student (standing behind John); Susan Bradbury-BPC; Chuck Thetford (behind Susan); Paula McCormick-EFCMN; Van Elliott-EFCMN; Dale Meyer-EFCMN student



From UNT day { Dave Meyer, EFCMN class 2011; Owen Richards; Christy Sas, NTCMN; Rosemary Carrizales , EFCMN Class 2011

**Those who participated at one or both events**

- |                                 |                            |
|---------------------------------|----------------------------|
| Dale Meyer                      | Carl Patrick               |
| John Soto - North Texas         | Paula McCormick            |
| Rosemary Carrizales             | Hilton Dickerson           |
| Van Elliott                     | Owen Richards              |
| Carol Fegan                     | Vin Merrill                |
| Chuck Thetford                  | Josh McClure - North Texas |
| John Bodnar                     | Marilyn Turnage            |
| Susan BradburyBlackland Prairie | Jeff ? - North Texas       |
| Adelaide Bodnar                 | Deborah Estes              |
| Christy Sas - North Texas       | Andie Krofina              |





**EFCMN veterans and military families, we salute and thank you for your service.**



**12<sup>th</sup> Annual Statewide Meeting & Advance Training**

**Report from Sharon Barr, webmaster**

The Texas Master Naturalist Annual conference this year on October 21 – 23 was at Mo Ranch in Hunt, Texas, again this year. The weather was perfect... not too hot and not too cold. There were 275 registered attendees at the conference, with 36 of the 42 Texas chapters represented. There were **10** members of the Elm Fork Chapter present, **4** of which are from this year's training class.

**Welcome New Chapters and New Members in 2011**

Bluestem Chapter

Bois d'Arc Chapter

Longleaf Ridge Chapter

**Awards & Recognition Ceremony Saturday night**

**Attendees at 500 Service Hours Milestone**

Judi Elliott

Van Elliott

**Attendees at 1,000 Service Hours Milestone**



Van Elliott & Judi Elliott



Diane Wetherbee

Marian Kester



Elm Fork Chapter won 3rd place for a LLELA Project Presentation thanks to Diane Wetherbee.

Diane was awarded a \$100 check for the chapter and a gate sign.



**Save the date!**

**2012 Statewide Annual Meeting & Advanced Training**

**October 26 – 28, 2012**

**Camp Allen, Navasota, Texas**



2012 Annual Re-Certification Pin

Artwork by Jan Redden, Gideon Lincecum Chapter

**Texas Master Naturalist Program Accomplishments**

*The Texas Master Naturalist program began as a statewide initiative during 1998. The program is jointly sponsored by the Texas Agrilife Extension Service and the Texas Parks & Wildlife Department and is supported by more than 300 additional partnerships through local chapters statewide.*

- ★ Through December 2010, with combined efforts of **42 recognized local chapters**, the Master Naturalist program has trained **6,737 volunteers**.
- ★ Master Naturalist volunteers dedicated over **256,157 service hours** in 2010, directed toward natural resource community projects, research, and outreach resulting in a cumulative total of **1,482,329 hours of service** to date.
- ★ The economic impact of Texas Master Naturalist volunteer service throughout 2010 is valued at **\$4,995 Million** and **\$29 Million to date**.
- ★ These 6,700+ volunteers also obtained **37,980 advanced training hours** in 2010.
- ★ TMN volunteers conducted over 2,700 outreach, education and technical guidance events in 2010 with over 70% of those events being direct contact programs where volunteers provided hands-on outreach, education or consultation to nearly 170,000 youth, adults and private landowners.
- ★ To date Texas Master Naturalist volunteers have made over **2.5 Million public contacts** through their volunteer service while spreading a conservation and natural resource message.
- ★ Program volunteers have impacted or conducted projects on areas of land that involve roughly **155,000 acres** of habitat while also developing or maintaining some **1,350 miles of interpretive trails**.
- ★ 30 International, National, State and Local Awards have been received for Texas Master Naturalist program, chapter and individual volunteers' efforts to date.
- ★ Over **70% of Texas counties** (178 counties) are served by a recognized Texas Master Naturalist Chapter.



*Texas Master Naturalist*

**ELM FORK CHAPTER**  
Texas AgriLife Extension  
306 North Loop 288, Suite  
222  
Denton, TX 76201  
76209-4887

*Education, Conservation, Preservation, Restoration*

**We're on the web**

[www.txmn.org/elmfork](http://www.txmn.org/elmfork)

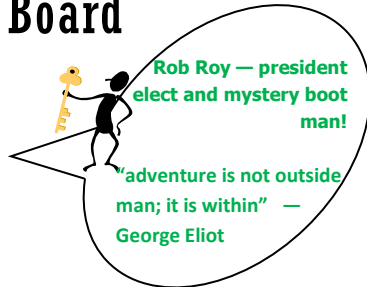
OUR MISSION . . .

*"to develop a corps of well-informed volunteers who provide education, outreach, and service dedicated to the beneficial management of natural resources and natural areas within our community"*



## Members of the Board

- PRESIDENT—George Kragle
- VICE-PRESIDENT —Rob Roy
- SECRETARY—Marian Kester
- TREASURER—Kay Crowe
- CLASS REPRESENTATIVE—Deborah Estes
- MEMBER-AT-LARGE—Doug Chadwick



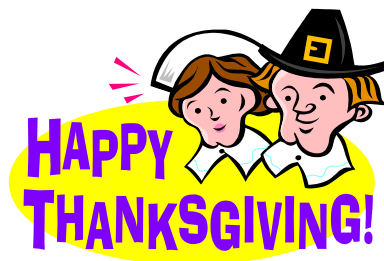
**Rob Roy — president elect and mystery boot man!**

*"adventure is not outside man; it is within" — George Eliot*

**BOARD COMMITTEE CHAIRS:**

- Communications—Monica Chafin
- Projects—Susan Pohlen
- Publicity—**OPEN**
- Training—Van Elliott

ADVISOR—Janet Laminack



## Monthly Chapter Meetings

9:30 a.m. preceded by a social time at 9:00 a.m. on the third Thursday of each month.

Chapter meetings are open to the public.

**Next meeting: November 17, 2011**—Doris Mager shares her knowledge and insight on birds of prey

**December 15, 2011**—Holiday meeting and gift exchange



Kudos to all the wonderful people who made this newsletter possible!

## Board Meetings

The Board meets each second Thursday of the month at 9:30 a.m., Denton County AgriLIFE Extension Office. The Board last met November 10, 2011. Next meeting is December 8, 2011.

Board meetings are open to members.