

Fauna Survey Mockingbird Park July 1, 2013 65° high overcast light breeze at start

Birds: (eBird Checklist S14547097)

American Crow *Corvus brachyrhynchos*

Barn Swallow *Hirundo rustica*

Bewick's Wren *Thryomanes bewickii*

Blue Jay *Cyanocitta cristata*

Carolina Chickadee *Poecile carolinensis*

Carolina Wren *Thryothorus ludovicianus*

Cattle Egret *Bubulcus ibis*

Common Grackle *Quiscalus quiscula*

Dickcissel *Spiza americana*

hummingbird sp *Archilochus* sp.

Mourning Dove *Zenaida macroura*

Northern Cardinal *Cardinalis cardinalis*

Northern Mockingbird *Mimus polyglottos*

Painted Bunting *Passerina ciris*

Rock Dove *Columba livia*

Scissor-tailed Flycatcher *Tyrannus forficatus*

sparrow sp. Possibly young lark sparrows,

Turkey Vulture *Cathartes aura*

Insects:

Black Swallowtail caterpillar *Papilio polyxenes*
coloro



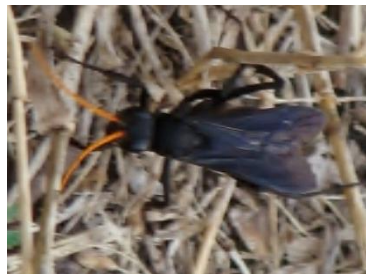
Two-striped Mirmiria Grasshopper
Mermiria bivittata



Honey Bee *Apis mellifera*



spider wasp *Entypus unifasciatus*



Queen Butterfly *Danaus gilippus*



Dainty Sulphur Butterfly *Nathalis iole*



Common Walkingstick - *Diapheromera femorata* -



Widow Dragonfly – *Libellula luctuosa*
male

and female



plus various unidentified grasshoppers, dragonflies,
bees and flies.

Cicadas *Tibicen superb* heard singing but not seen.