

T E X A S

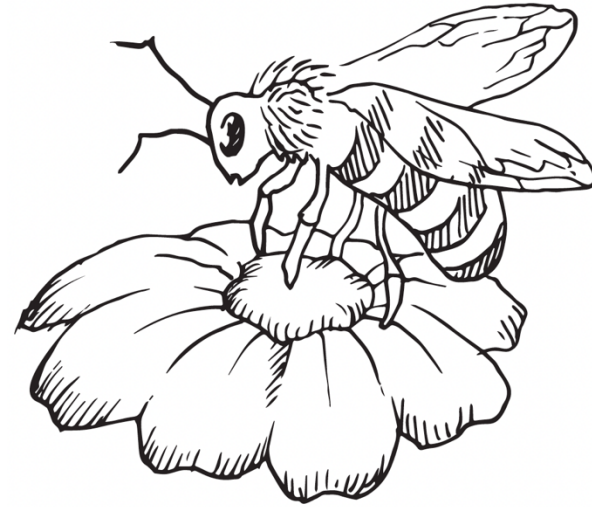


Master
Naturalist™
Lindheimer Chapter

<https://txmn.org/lindheimer/>

My Pollinator Activity Book

Name: _____



T E X A S

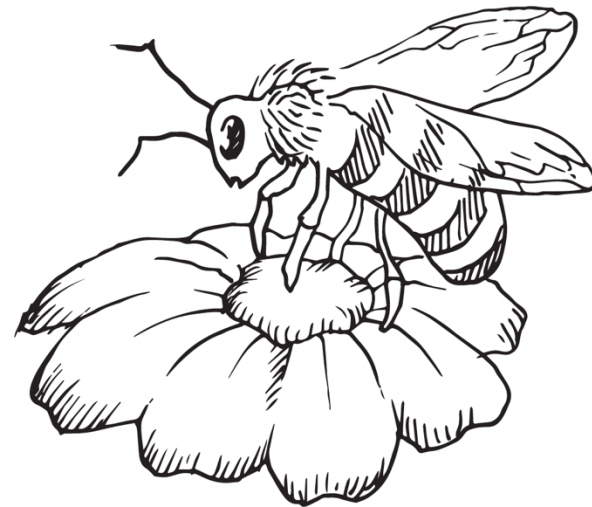


Master
Naturalist™
Lindheimer Chapter

<https://txmn.org/lindheimer/>

My Pollinator Activity Book

Name: _____



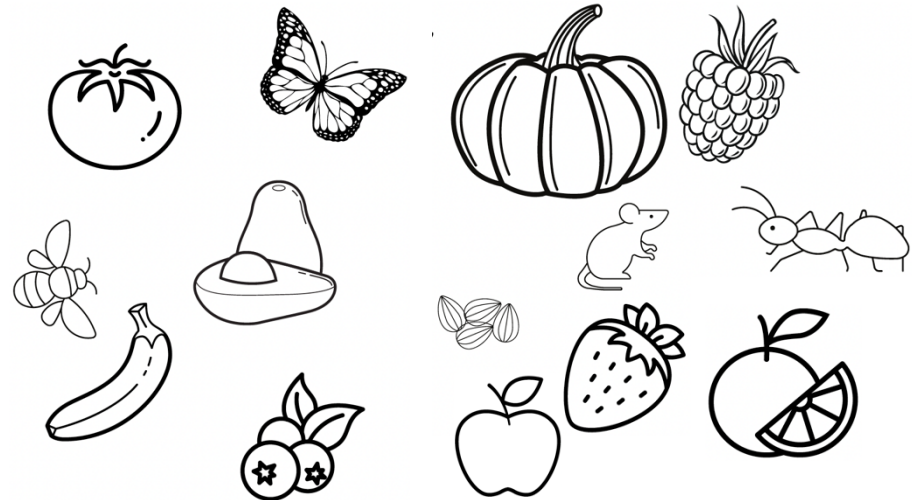
What is Pollination?

Pollination occurs when pollen is moved within flowers or carried from flower to flower by pollinating animals such as birds, bees, bats, butterflies, moths, beetles, or other animals, or by the wind.*



**www.polinator.org/pollination*

Color fruits and vegetables that rely on pollination!



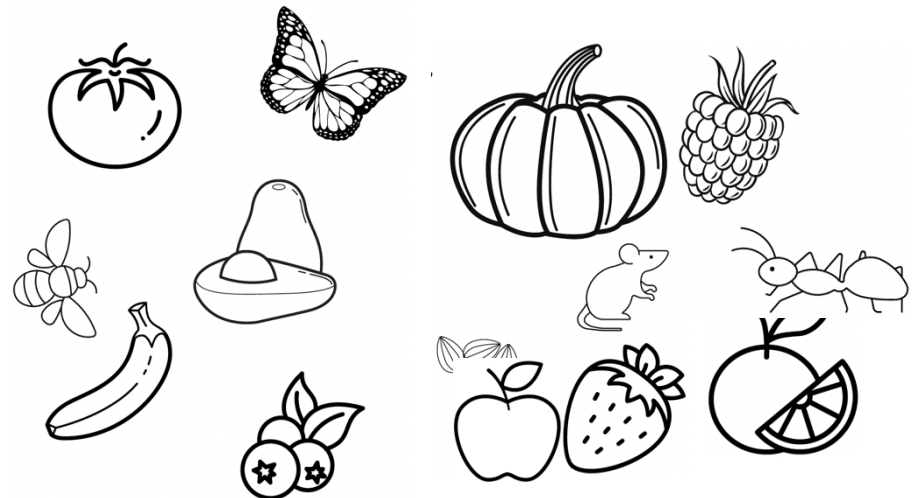
What is Pollination?

Pollination occurs when pollen is moved within flowers or carried from flower to flower by pollinating animals such as birds, bees, bats, butterflies, moths, beetles, or other animals, or by the wind.*

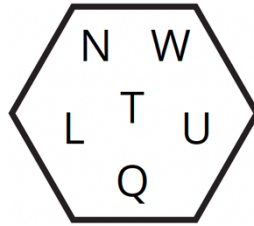


**www.polinator.org/pollination*

Color fruits and vegetables that rely on pollination!



Find the missing letter for each of these pollinators



_IZARD



S_UIRREL



MO_KEY



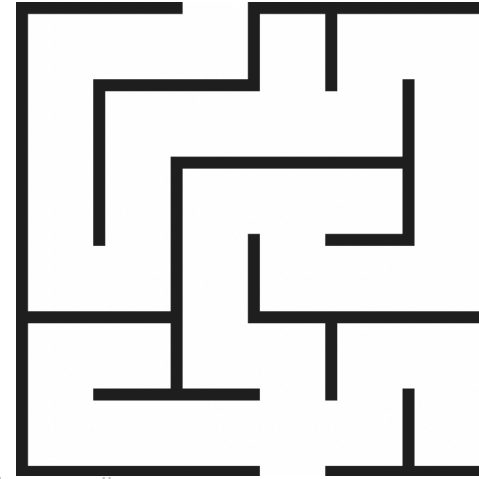
MO_SE



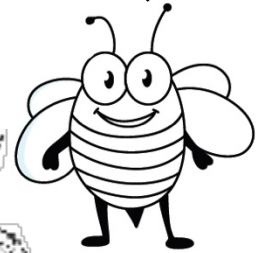
_ASP



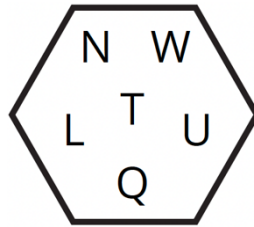
AN_



Hi! I'm Buzz the Bee!
Can you help me find my way through the maze to the flower?
Coloring the flower also helps.



Find the missing letter for each of these pollinators



_IZARD



S_UIRREL



MO_KEY



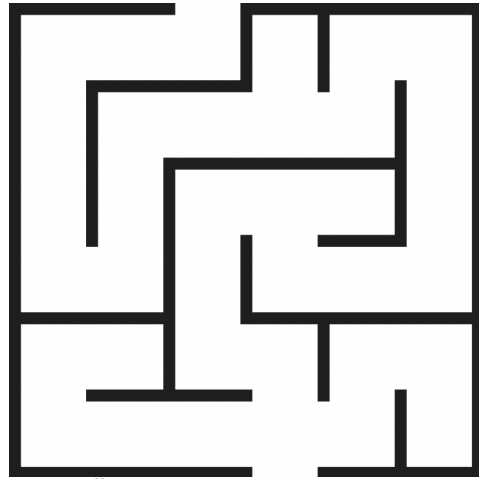
MO_SE



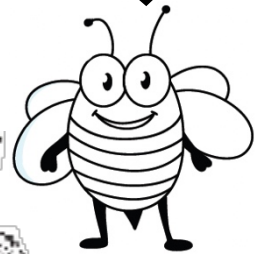
_ASP



AN_



Hi! I'm Buzz the Bee!
Can you help me find my way through the maze to the flower?
Coloring the flower also helps.



How many spots are on this butterfly?



Can you color the spots on this butterfly?

How many spots are on this butterfly?



Can you color the spots on this butterfly?

Draw a line between the picture and the correct word.

Q: Can you guess what these animals have in common



Butterfly

Bird

Beetle

Moth

Bat

Bee



A: They are all pollinators!

Draw a line between the picture and the correct word.

Q: Can you guess what these animals have in common



Butterfly

Bird

Beetle

Moth

Bat

Bee



A: They are all pollinators!