

Post Oak

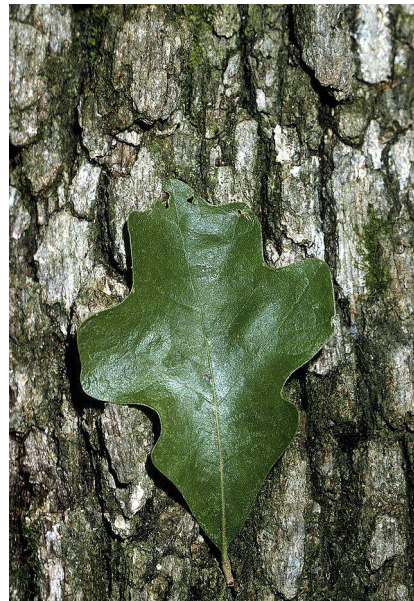
Quercus stellata

The Post Oak is related to the white oaks, but tends to grow smaller. Its common name derives from its frequent use to make fence posts in early America as the tree is not suited for lumber, but is hard and rot resistant.

Its range covers most of the SE United States, and it can grow in poor soils and conditions.

The tree often has what appears to be a haphazard arrangement of branches. When the leaves fall, it has a ghoulish appearance often associated with haunted houses and graveyards.

The wood of the tree is popular with Texas barbecue cooks for smoking meat.



This sign provided by Polk County Fresh Water Supply District #2