

Marvelous metamorphosis

Complete and
incomplete



What is metamorphosis?

Metamorphosis is the transformation of a living creature from egg or hatching, through stages, to an adult form.

Complete metamorphosis includes 4 stages—egg, larva, pupa, adult/imago.

Incomplete metamorphosis includes egg, several nymphal stages and adult.

Amphibians go through a somewhat different form of complete metamorphosis as they transition, in general, from aquatic to terrestrial creatures.



Eggs and larva



Pupa and adult



Changes.....nymph and
adult.

Complete is egg, to
larva, pupa adult

Incomplete egg nymph
or naiad, adult or

Which is frogs?



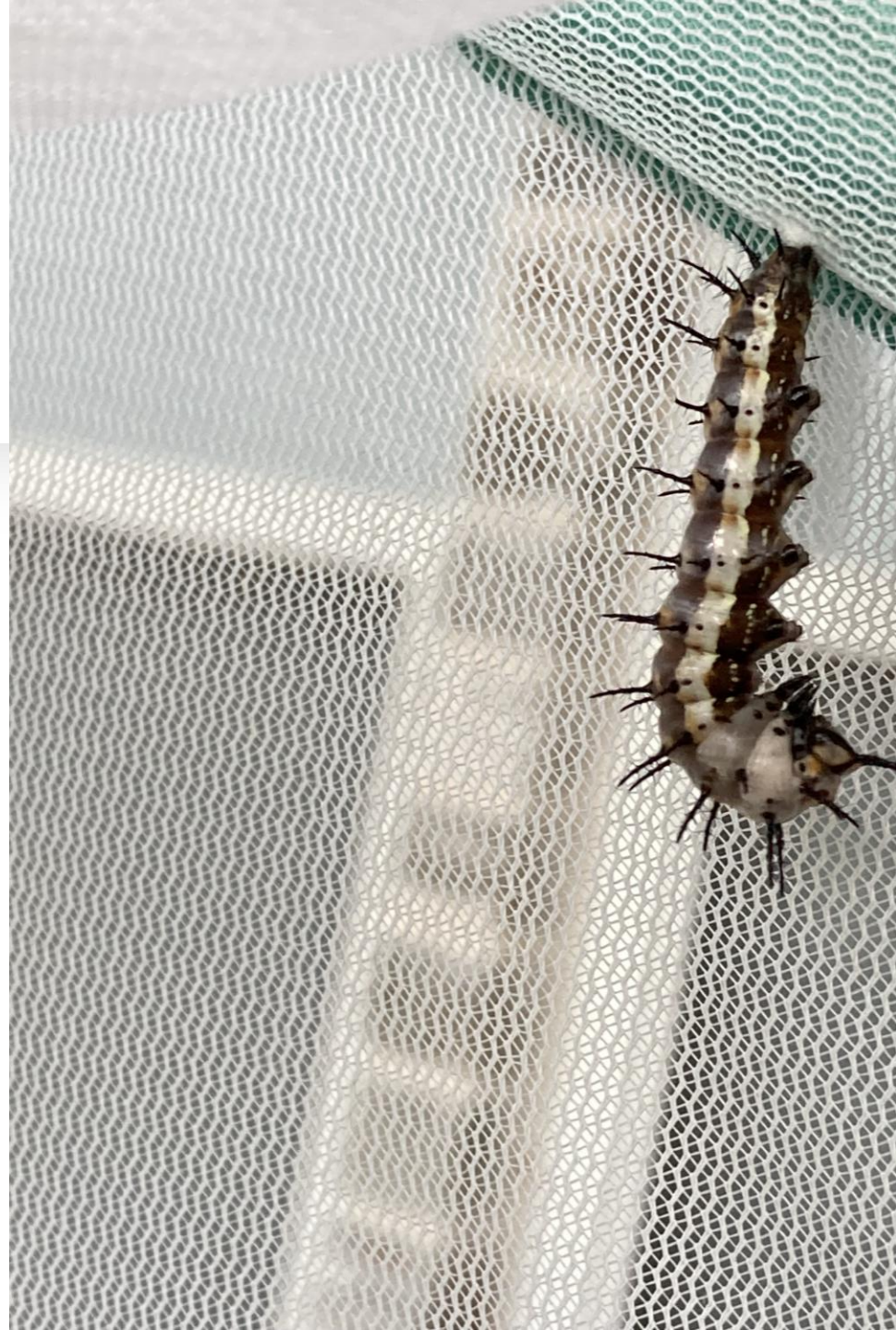
To *Jingle Bells*

Egg to larva, pupa, adult (counting 4 fingers)

Metamorphosis complete—

Egg, nymph, naiad and adult, (counting 3 fingers)

Incomplete is also neat!



Which stages of metamorphosis can you find on your walk?

What foods could you use to show stages of metamorphosis—pretzel sticks and twists, Skittles, gummy butterflies?

What can you use for a metamorphosis craft?



Living things
change as
they
develop.

