

BPTMN Class of 2014

Congratulations !!!



You've Finished the Class - Now What?

- Find something you like to do and put 40 hours of volunteer effort into it
 - This is *nothing* – less than 1 hour per week
But I know some of you will find it challenging – I did as well
 - As a starting point, use the Web Info Tab
 - Use your Mentors and Board Members (listed on every web page)
 - Some of your classmates have already done 40 hours and more.
It's rewarding if you're having *FUN*.
 - Do NOT do anything you don't *want* to do
- Come to Chapter Meetings – 2nd Tuesday of each month at 7:00 pm - network with us



Our Most Used Partners

(based on hours entries last year)

- **Blackland Prairie Raptor Center**
3900 hours - Construction, Animal Care, Talks, Trail Guides
- **Heard Museum**
2400 hours – Trail Guides, Bird Banding, Plant Sale, Animal Care, Garden Maintenance
- **BPTMN**
2300 hours - JMN, Chapter Management, 2013 class, PLT Conference
- **Plano Independent School District**
650 Hours – Trail Guides, Garden Maintenance, Animal Care
- **Connemara Conservancy Foundation**
600 hours – Trail Guides, Beetle Project, Facility Maintenance/Construction
- **Cornell Ornithology Lab**
480 Hours – surveys & watches



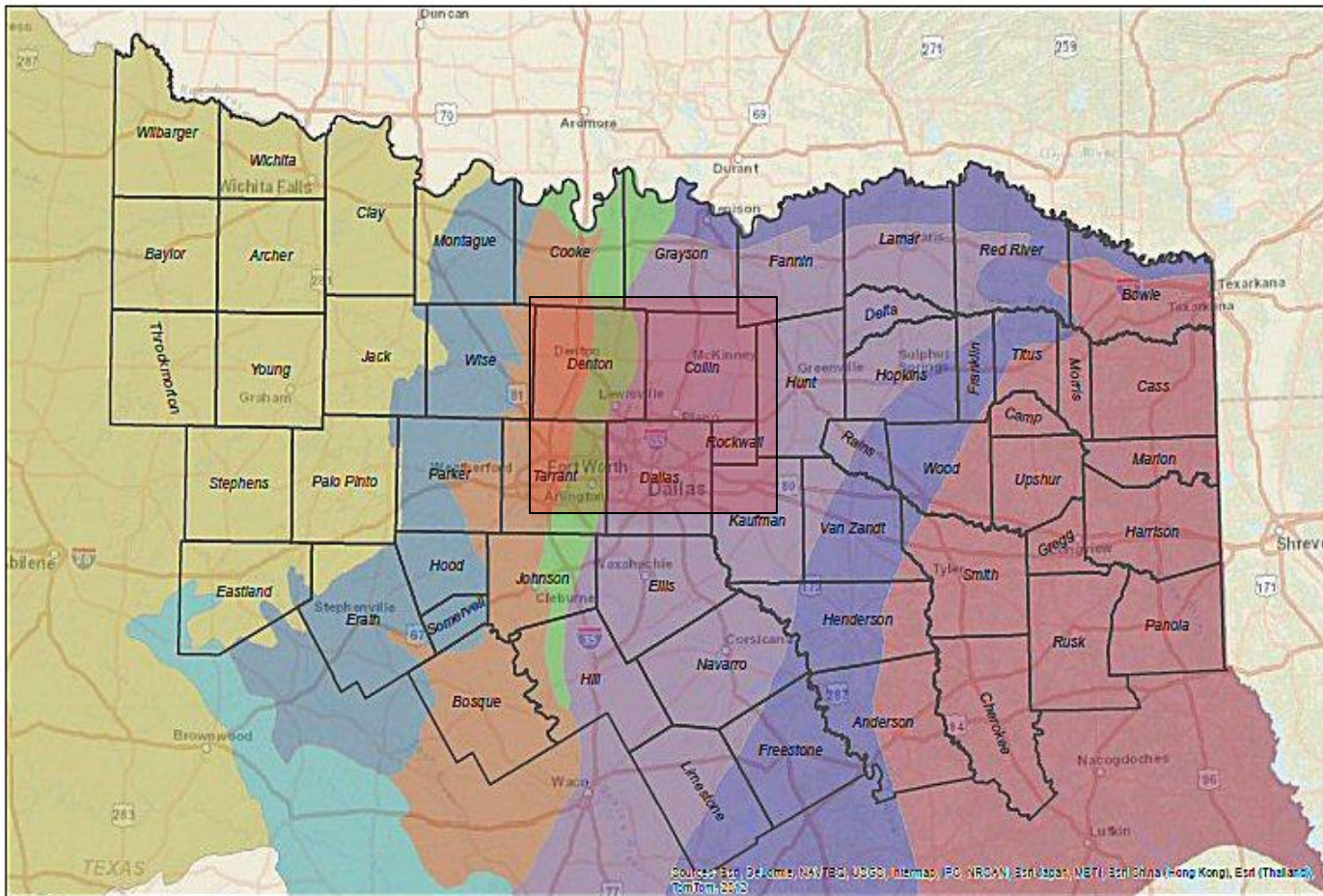
Our Biggest Activities

(by hours)

- 2800 - Trail Guide & Education
- 2400 - Facility/Trail Construction/Maintenance
- 1540 - Education Programs & Booth Staffing
- 1080 - Live Animal Presentations & Care
- 1020 - BPTMN Board/Committee Duties
- 980 - Bird Banding, ID, & Surveys
- 350 - Junior Naturalists



Where We Serve



Ecoregions of North Texas

Service Area Counties

Ecoregions

Region Type

- Mesquite Plains
- Western Cross Timbers
- Grand Prairie
- Eastern Cross Timbers
- Blackland Prairie
- Oak Woodlands
- Mixed Pine-Hardwood Forest
- Lampasas Cut Plain

Predominantly Collin County but we also have work in Dallas County (Fair Park), Tarrant County (BRIT) and Denton County (LLELA) and others



Our Sister North Texas Chapters

Our service areas overlap, but in general:

- Bluestem – Grayson County
- Bois d'Arc – Fannin County
- Cross Timber – Tarrant County
- Elm Fork – Denton County
- Indian Trail – Ellis & Navarro Counties
- North Texas – Dallas County



Member in Good Standing?

What does this mean?

- Paid your Dues - \$20/year due annually in January (you're paid up for 2014)
- Passed a Background Check - \$10 due every third year in January (you're good until 2017)
- 40 or more approved volunteer hours each year
- 8 or more approved hours of Advanced Training each year



Certificates & Pins

- You get your Class certificate after
 - ~40 hours of class work including 3 field trips (50-60 hours total)
 - Most of you have completed these requirements
- You become a certified TMN and get your Dragonfly pin after
 - 40 hours of volunteer work
 - 8 hours Advanced Training
 - Above must be completed before May 2015
- You get the 2014 Armadillo Pin IF you complete by Dec 31, 2014
 - An additional 40 VH (80 hours total)
 - An additional 8 hours of AT (16 hours total)

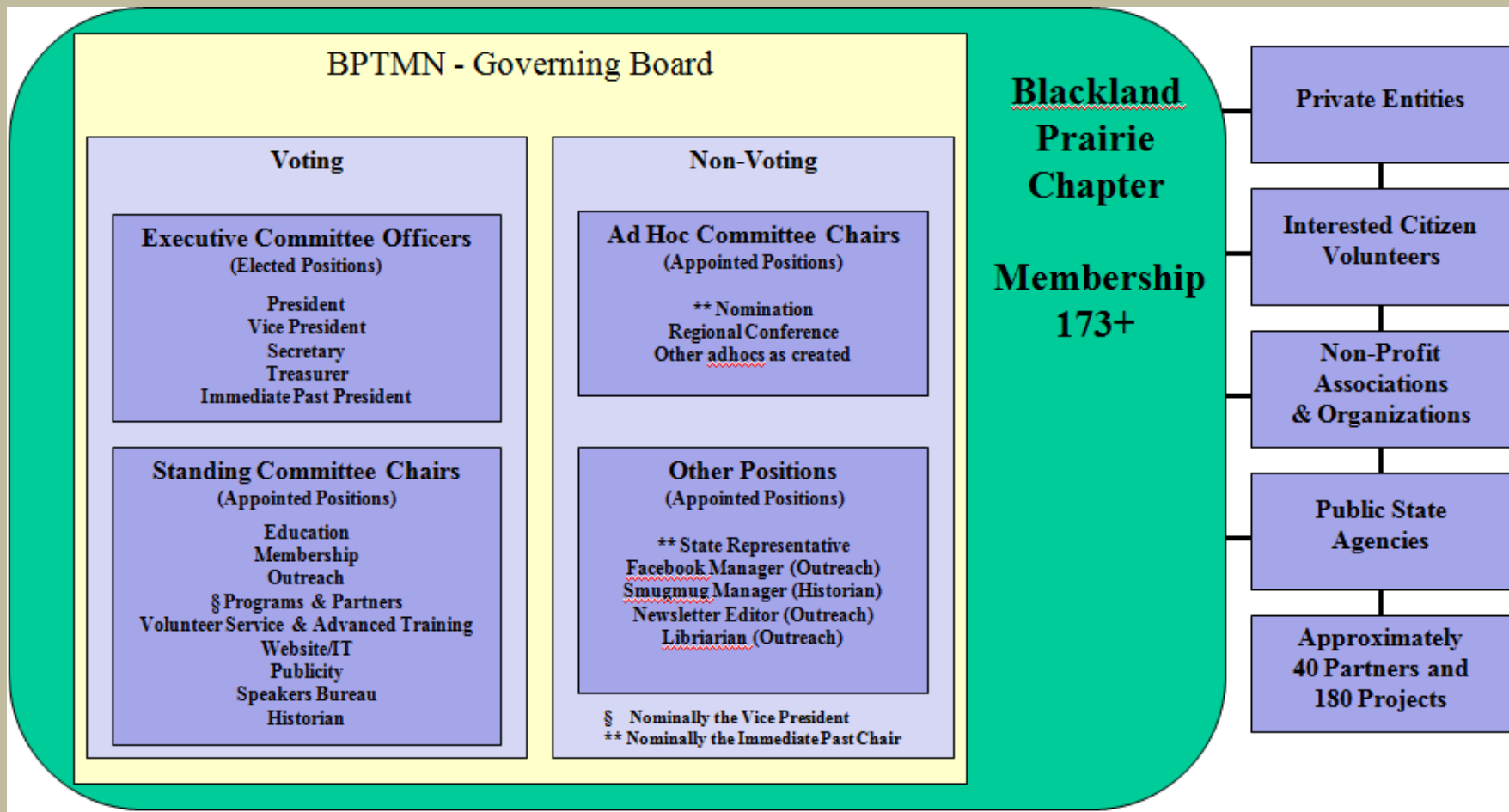


Why Come to Chapter Meetings?

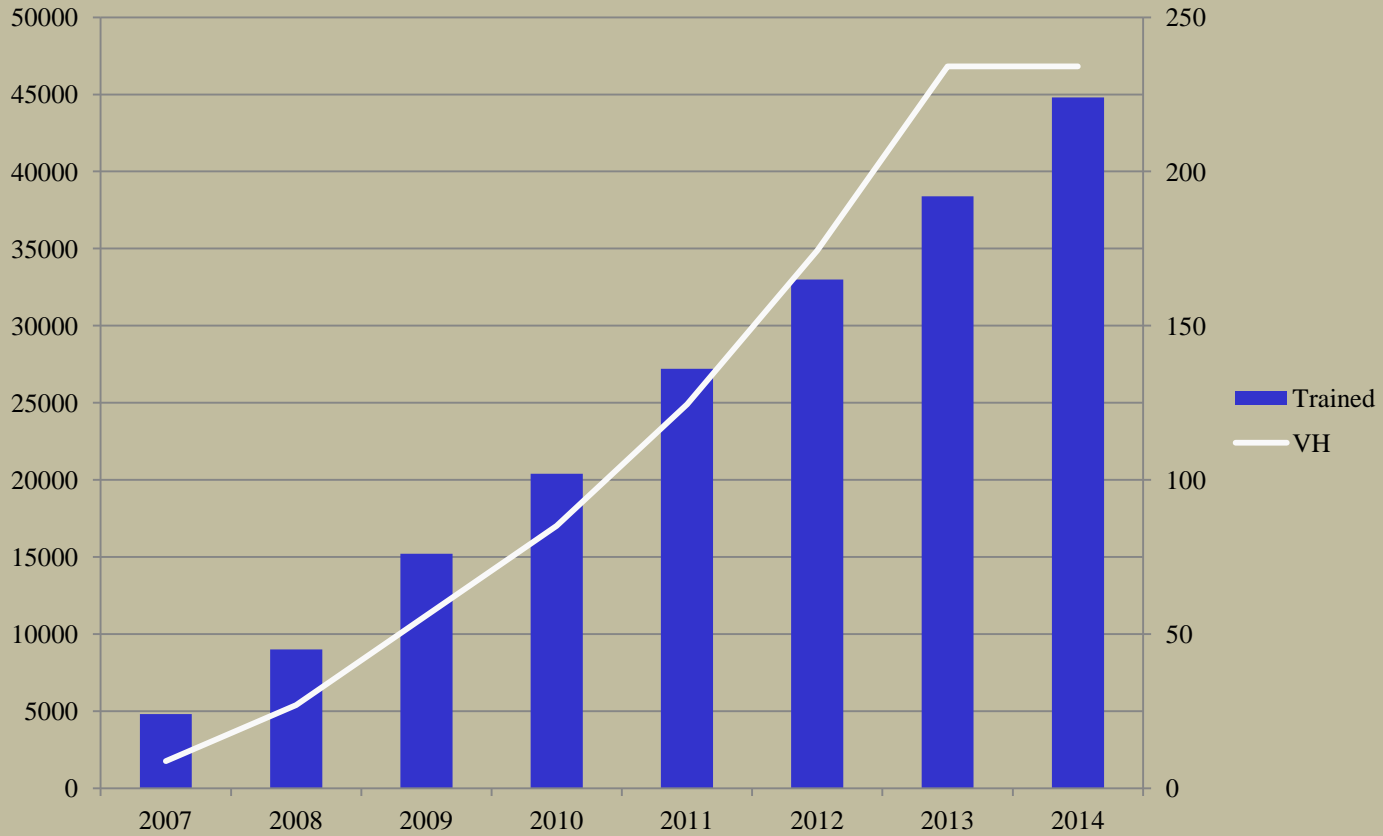
- Why not?
- We have good speakers and they count as one AT hour each (except for the January Open House)
 - Come to 8 meetings and you've met your 8 hours of AT for recertification
- Opportunity to network with other members
- Block off the 2nd Tuesday of the month



Organization Chart



Chapter Growth



It's Not All Outside Work !

- This Chapter needs you! And not just to get your feet muddy.
- Running an organization this size takes a considerable amount of administrative effort
 - Officers & Standing Committee chairs (Board members)
 - Standing Committee members
- Administrative work is legitimate VH
- New Board members are elected or appointed in December and become effective in January
- *Participation* in committee work can start at any time



How to get involved in the *Management* of the Chapter

- If you are interested in being on a Committee, talk to the committee chair (list of chairs is on bottom left of each website page)
- Show up at committee meetings
- If you are interested in being on the Board in some capacity, talk to Dave Powell or me.
- Attend a few Board meetings and show your interest

Remember - the decisions are made by those who show up



When Does the Board Meet

- The Board meets the *Thursday before* the chapter meeting.
- You are invited and encouraged to attend – especially if you want to work on a committee or run for Chair
- Please notify the Secretary ahead of time due to limited seating



In Conclusion

Don't be a stranger!

You're one of us now.

