

TWENTY-FIFTH ANNIVERSARY EDITION

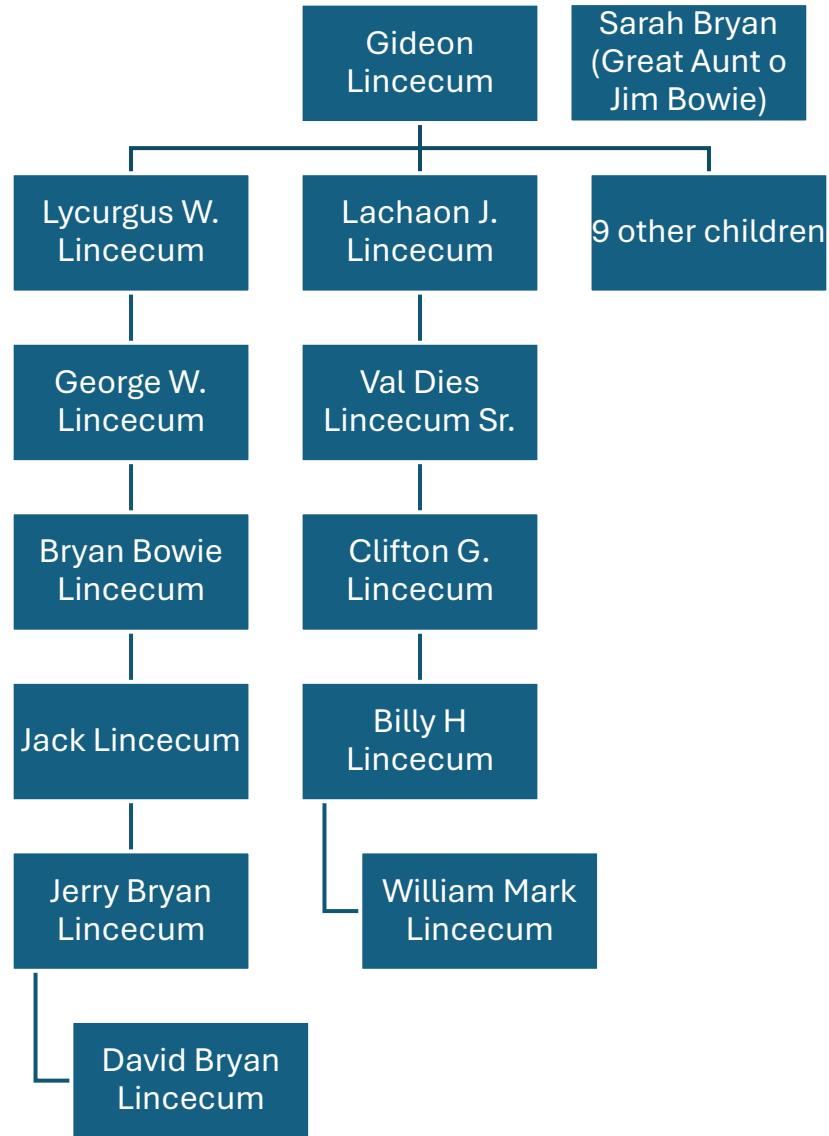
Adventures of a Frontier Naturalist

THE LIFE AND TIMES OF DR. GIDEON LINCECUM



*Jerry Bryan Lincecum, Edward Hake Phillips
& Peggy A. Redshaw*

*Introduction by JERRY BRYAN LINCECUM • Foreword by A.C. GREENE
Preface to the Second Edition by JERRY BRYAN LINCECUM AND
PEGGY A. REDSHAW*



Copying Press



Copying Press



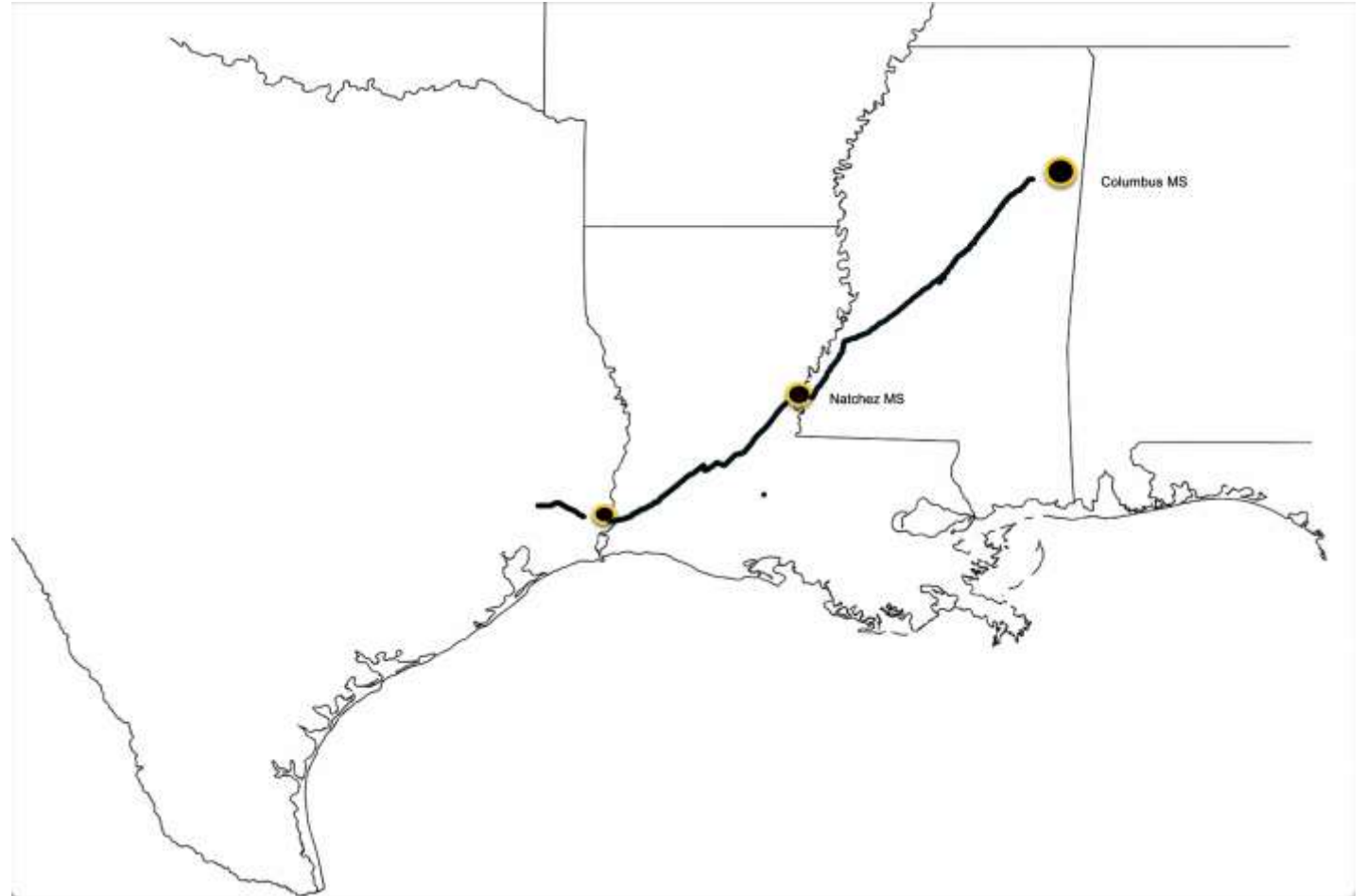
Saddlebag Medicine Kit



January 1835 Route to Texas

through the Chickasaw Nation, the Natchez Trace through the Choctaw Nation to the Mississippi River, across the Ouachita, Little and Red Rivers. On February 3 the Sabine River was crossed and the expedition arrived “in the Spanish dominions”

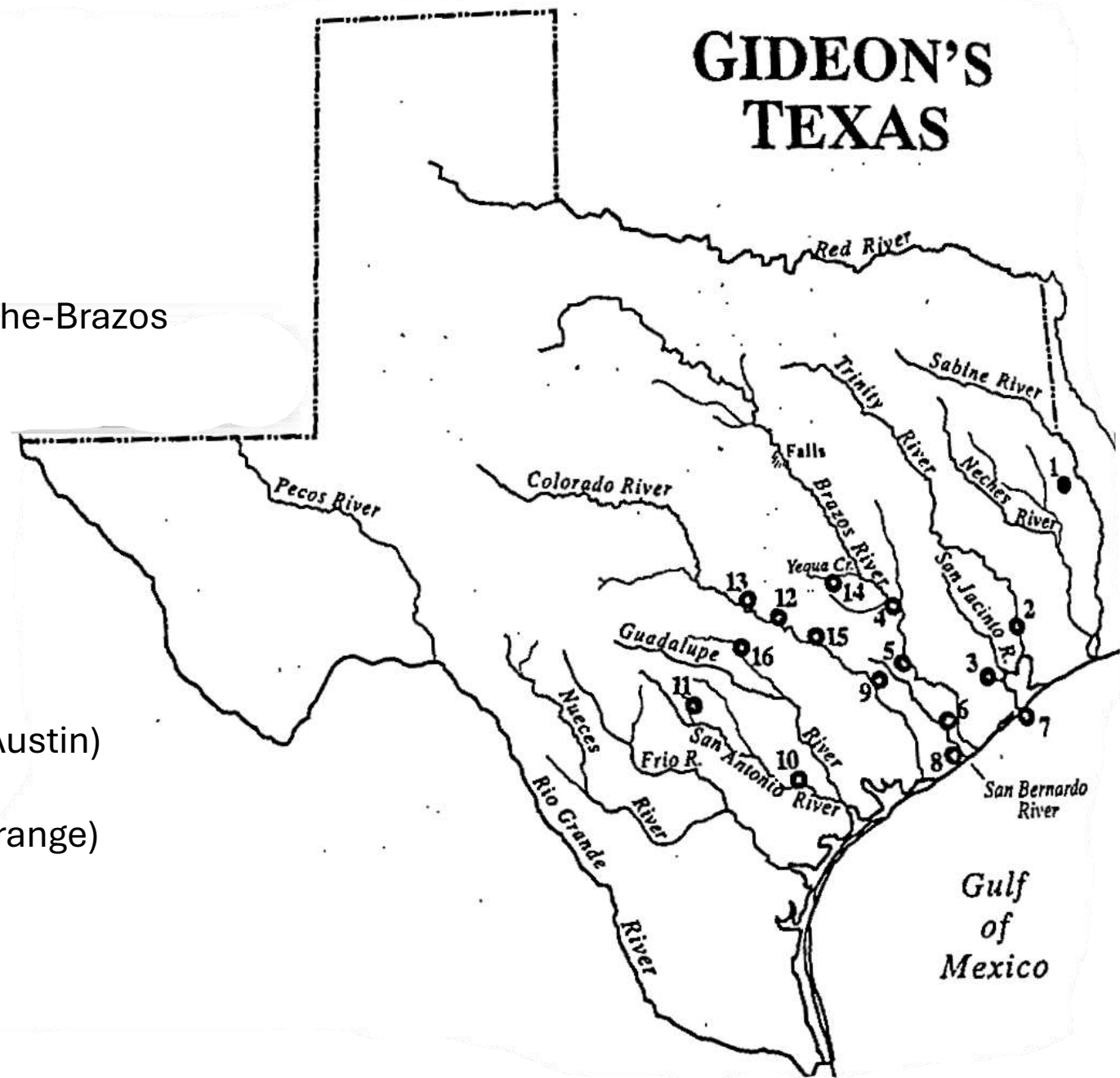
Crossed the Sabine on Feb 3

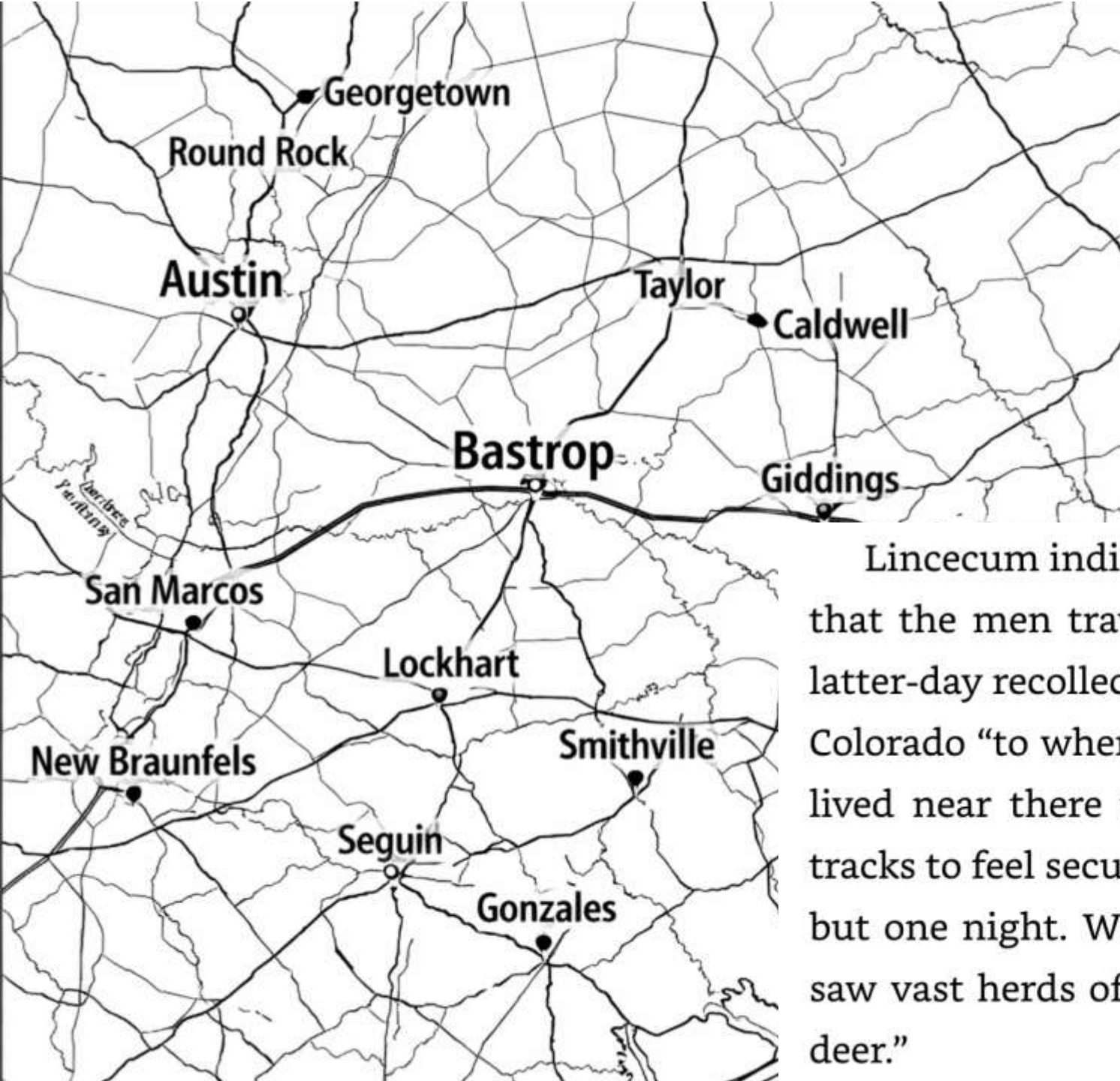


GIDEON'S TEXAS

KEY

- 1. San Augustine
- 2. Liberty
- 3. Houston
- 4. Washington-on-the-Brazos
- 5. San Felipe
- 6. Brazoria
- 7. Galveston
- 8. Churchill
- 9. Eagle Lake
- 10. Goliad
- 11. San Antonio
- 12. Bastrop
- 13. Barton's Bluff (Austin)
- 14. Long Point
- 15. Burnam's (La Grange)
- 16. San Marcos





Lincecum indicates in his journal of the 1835 expedition that the men traveled no farther than Bastrop, but in his latter-day recollections he states that they continued up the Colorado “to where Austin now stands.” He wrote: “Nobody lived near there then, and we found too many moccasin tracks to feel secure in regard to our horses. We stayed there but one night. We traveled over vast prairies southwardly; saw vast herds of wild horses, some buffalo, and countless deer.”

Gideon and the Birds

