

# THE TEXAS STAR

**NOVEMBER 2007** VOL. 5 No 11

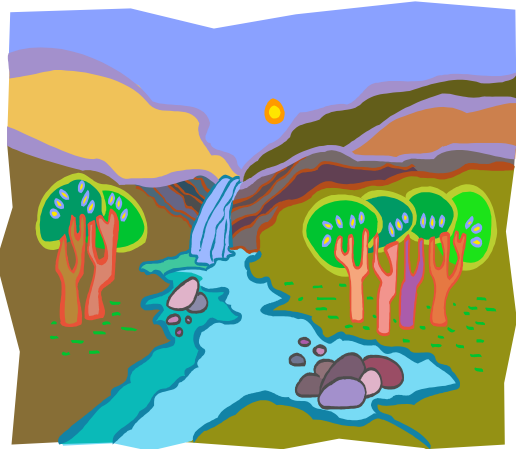


HILL COUNTRY CHAPTER

Chapter Website: <http://www.hillcountrymasternaturalist.org>

## NOVEMBER PROGRAM

### **“Water From Stone,” the story of *Selah*, Bamberger Ranch Preserve.**



Our speaker will be J. David Bamberger, environmentalist, teacher, ecologist, and much more. This is a program you won't want to miss!

For J. David Bamberger it's been quite a journey from first, a vacuum cleaner salesman, then to co-founder and CEO of Church's Fried Chicken, to an internationally recognized conservationist.

Growing up in rural Ohio during the Great Depression and World War II, Bamberger learned at an early age to shun waste, grow food productively, and admire the Amish for living in harmony with the land. His mother taught him to love the natural world and gave him a book that would set the course for his life: *Pleasant Valley*, by Louis Bromfield, a visionary American advocate for land restoration.

Inspired by his new role model, Bamberger would say, "If I ever

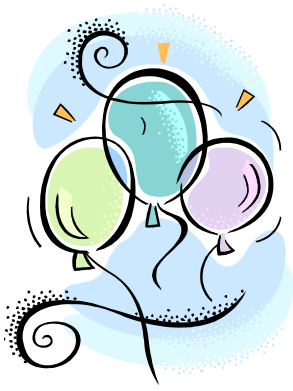
make money, I want to do what Bromfield did."

After finding that financial success, Bamberger bought what he describes as "the sorriest piece of land in Blanco County" and entered upon his three-decades-long effort to restore the ecological balance of 5,500 acres that had been virtually destroyed by more than a century of misuse. Naming his preserve *Selah*--from the Old Testament term meaning "pause and reflect"--Bamberger dedicates himself and his resources to protecting species and educating school children, conservation groups, government officials, and everyone else who will listen to his central message, delivered with evangelical zeal: We must take care of the earth, and anyone can help.

David and his wife, Margaret, have received many awards, and he has been featured in *The New Yorker*, in *Audubon*, and on CNN and network news (*We saw him on Texas Country Reporter, Sunday 11/11 on KENS5 ed.*)

The meeting will be at 7:00 p.m. Monday November 26 at Riverside Nature Center.





## PARTY!!

It's time for Hill Country Master Naturalists to celebrate our sixth year! This year our holiday party will be in Fredericksburg - **Saturday evening, December 1 from 6-8pm in the Cardinal Room of the Clubhouse on Golfers Loop in Lady Bird Johnson**

**Municipal Park.** Dress is holiday casual.

Rather than our usual sit-down dinner, this year we'll have more of a cocktail party atmosphere and an opportunity to mingle and get to know other members. **Cost will be \$10 per person to include heavy hors d'oeuvres and non-alcoholic drinks. Beer and wine will be available for a suggested \$2.50 donation per drink.**

We hope you and your spouse/partner can join us - please **RSVP to Marilyn Murrmann** [mmurrmann@gmail.com](mailto:mmurrmann@gmail.com) **by November 20** so that we can get an accurate head count for the caterer. You can pay Marilyn at the November 26 meeting, or mail your check to her at 4755 Goat Creek Rd, Kerrville TX 78028, or pay at the door. When RSVPing, please be sure to indicate whether you will be bringing a guest. Checks should be made out to *HCMN*.

Lady Bird Johnson Municipal Park in Fredericksburg is located just south of the Gillespie County Airport and Fair Grounds. Take Lady Bird Drive off Highway 16 South and follow it through the park, turning left on Golfers Loop. Go across the bridge and continue looping up and around until you get to the Golf Clubhouse at the top of the hill. The Clubhouse is about 1 1/4 miles from the park entrance.

We look forward to seeing you at this fun get-together!

---

### PRESIDENT'S MESSAGE

As we come to the close of another successful year in the life of our Chapter, it's a good time to look back at what we've accomplished in 2007. Here are some of our noteworthy achievements:

At the request of the Texas Forest Service, our Chapter sponsored the "Citizen Wildfire Ecology Specialist" course for our area. This 30-hour course was organized by Priscilla Stanley and Jane Crone, and took place in Fredericksburg for three full days in February, with 31 trainees.

A group of volunteers began to collect data at the Butterfly Garden in Kerrville-Schreiner Park for the Monarch Larval Monitoring Project. This citizen science project, sponsored by the University of Minnesota, involves volunteers from across the US and Canada in monarch research by collecting data on larval monarch populations and milkweed habitat. Kip Kiphart provided a special training session for participants in March, and Ginny deWolf

took on the coordination of the project for our Chapter.

Tom Collins initiated a fauna census project at Riverside Nature Center, with Chapter members identifying and reporting on birds, insects, amphibians, reptiles, and mammals. Volunteers work individually or in small groups to document the fauna at the Nature Center.

A group of Gillespie County members designed and built a Handicap Accessible Trail at Lady Bird Johnson Park in Fredericksburg. Bill Lindeman, President of the Friends of the Fredericksburg Nature Center and a long-time Friend of our Chapter, worked closely with our volunteers to create a functional and scenic route for wheel chairs. The trail passes through the Fredericksburg Nature Center Butterfly Garden. It also leads to a bird viewing area with an innovative design allowing wheel chair access to the bird blind. The Handicapped Access Trail project was selected for

submission as the Chapter's entry at the Annual State Meeting in San Antonio in October.

Hummingbird feeders were donated to Riverside Nature Center, with volunteers monitoring and refilling the feeders during the season.

The Chapter was recognized for Jim and Priscilla Stanley's work with native plants at the Progressive Farmer Idea House, and Golden Eagle Landscape contributed \$400 in appreciation of their help with native plant identification and trail design.

The Chapter donated copies of *Water from Stone*, the story of the Bamberger Ranch Preserve, to the seven public libraries in our four-county area.

A committee was formed to tailor the State's Chapter Operating Handbook template to the Hill Country Chapter of Texas Master Naturalist. The resulting document lays out the Chapter policies and guidelines and will be voted on by the membership at the November meeting.

The Chapter worked in partnership with Riverside Nature Center to hold a plant sale in conjunction with the "Down by the Riverside" festival, earning over \$1700 from the proceeds.

Our sixth class was held at the Lions Camp in Kerrville with 24 trainees in the Class of 2007.

Land Management Assistance Program (LMAP) visits were conducted at 34 properties totaling 2866 acres. In the three years since its inception, LMAP has advised over 100 land owners on almost 10,000 acres.

Presentations at seven of our monthly meetings qualified for Advanced Training (AT). Field trips were conducted to Spring Creek Springs in June and Fessenden Springs in September.

We can all be proud of our accomplishments as a Chapter as we look forward to another year of activities benefiting our natural resources and natural areas. Thanks to all of you for your good work!



---

## ADVANCED TRAINING

**December 4, 2:00 p.m., Riverside Nature Center**

***Overabundance of White-tailed Deer, Impacts and Current Solutions***

High numbers of white-tailed deer are taking a toll on our native plants. Rufus Stephens, wildlife biologist with Texas Parks and Wildlife Department will cover some of the impacts of white-tailed deer on the native plant community, current population trends, and solutions for managing this challenging situation.

---

## AWARDS, CERTIFICATIONS, AND MILESTONES...

**Certified Texas Master Naturalist**  
Marilyn Knight

**1<sup>st</sup> Year Special Recertification**  
Gloria Costello  
Charles Smith  
**Milestones**

**Polished Silver (2500 hours)**  
Angelo Falzarano  
Ron Hood



**Brushed Silver (500 hours)**  
John Huecksteadt  
Cynthia Johnson

**Bronze (250 hours)**  
Warren Ferguson  
Diane McMahon  
Edna Platte  
Virginia Sawin



## VOLUNTEER PROJECT OF THE MONTH

### A Report on “Down By the Riverside”

This annual nature education event and Native Plant Sale that our Chapter co-sponsors with our nature partner, Riverside

Nature Center (RNC) was a great success thanks to our many volunteers from both organizations. RNC estimated an attendance of 446 people. Even though we purchased 30% more plants than in previous years to meet increasing demand, we sold down to a cost basis of about \$250. Plants grown by our members are helpful in ensuring a more profitable sale and in providing additional variety to our native plants offered. RNC and our TMN Chapter each netted approximately \$1770 for our respective programs.

The three nature presentations on Native Trees, Backyard Wildscapes and Backyard Critters (with live animals) were very well attended. The continuous children’s nature and crafts activities on Saturday from 9 am to 3 pm were extremely popular. Canoe rides on the Guadalupe River were another special opportunity for our attendees, and we thank our members who brought their canoes and/or paddled.

Our Chapter members worked 142 hours on Friday and Saturday. Many additional hours were spent in months of planning and pre- and post-event work. Our sincere thanks go to our TMN volunteers who made this event so successful. They are: Susan Longacre, John Quinby, Cynthia Johnson, Jack & Karen Millikan, Donna Snow Robinson, Jerri Workman, Phyllis Muska, Otis Fox, Julie Gibson, Steve Dodge, Chuck Smith, Guy Harrison, Anne Cassidy, Peggy Robinson, Elaine Payne, Diane McMahon, Nina Wagner, Kevin Pillow, Sherry Egloff, Janet Csanyi, Adele Junkin, Martha Miesch, Marguerite Belec, Sara Hendricker, Barbara Gaddis, Carol Ann Neunhoffer, Maura Osborne, Sharon Rodriquez, Jane Crone, Barbara Lowenthal, Priscilla Stanley, Scott & Sandra Magee, Warren Ferguson, Jim Stanley, Angelo Falzarano, Priscilla Bailey, Barbara Noblin and Bill Csanyi (TMN spouse). If we have inadvertently missed anyone, please let Priscilla Stanley know ([jbstan@kctc.com](mailto:jbstan@kctc.com)) so we can thank you next month.

*[If you are a project leader, or you participate a project that should receive more attention, please send me a few paragraphs describing what it is, how it came about, what tasks are involved, when the work happens, and any additional information, such as tools to bring, shoes to wear, who to contact, etc. And please include the **project number**.] dsr*



### WALK SOFTLY... Reducing our carbon footprint

This time of the year, we are all being inundated with catalogs. Recently the Chicago Tribune listed four services that can help reduce your catalogs and junk mail:

- Catalog Choice: [www.catalogchoice.org](http://www.catalogchoice.org). This web-based free service says it will allow users to stop getting catalogs from more than 1,000 retailers.
- Mail Preference Service: [www.dmchoice.org/mps](http://www.dmchoice.org/mps). Offered by the Direct Marketing Association, which represents mass mailers, this service costs \$1 and will keep your name from being placed on *future* mailing lists for three years, but it will not stop catalogs and other mail advertising materials you already receive.

### Too Much Information??

- GreenDimes: [www.greendimes.com](http://www.greendimes.com). For \$15 GreenDimes will send you customized, preprinted postcards to send to retailers to stop getting catalogs and junk mail. The organization uses part of the proceeds to plant trees.
- 41Pounds: [www.41pounds.org](http://www.41pounds.org): This group contacts 20 to 30 direct-mail companies on your behalf to stop bulk mailings, and it also provides stamped, pre-addressed postcards to send to retailers that require signed opt-out requests from consumers. Part of the fee goes to community and environmental organizations.



## FROM THE EDITOR...

Since this is the last newsletter of 2007, I would like to take this opportunity to thank all the good people who made this volunteer opportunity a pleasure and a privilege. First, to all who passed along comments, suggestions, and compliments – your thoughts are appreciated, and taken into consideration.

And to those whose contributions this year have made the newsletter

what it is, including:

Dan Behringer  
Norma Bruns  
Tom Collins  
Sharon Corley  
Ginny deWolfe  
Cathy Downs  
Betty Gardner  
Nyta Hensley  
John Huecksteadt  
Kip Kiphart  
Susan Longacre

Barbara Lowenthal  
Sandra Magee  
Phyllis Muska  
Sandy Pena  
Don Robinson  
Susan Sander  
Jim Stanley  
Priscilla Stanley  
Nancy Vaughan  
Kim Whitaker

## ***MANY THANKS!***



### *And onward...*

Please feel free to contact me or any member of the Board of Directors if you have comments, suggestions, updates, corrections, or anything you want to say about the newsletter:

Are there programs or projects you would like to see featured in 2008?

Success stories you want to share?

Tales of caution about projects or activities that didn't work?

Parts of the newsletter that bore you?

Members you know who are hiding their light under a bushel?

Do you have photos of projects or programs we can publish?

Are there resources you have found useful in your TMN activities that others should know about?

Donna Snow Robinson, Editor

Contact me at: 830-257-9452 cell: 739-2136 email: [dsrassoc@ktc.com](mailto:dsrassoc@ktc.com)



## FROM THE HERBARIUM

**Big Red Sage**  
(*Salvia Penstemonoides*)

**Family:** Labiatae (Mint)  
**Genus:** *Salvia*  
**Species:** *penstemonoides*

**Category**  
Perennial

**Bloom Time**  
June to October

**Height**  
3-6 feet

**Foliage**  
Herbaceous

**Sun Exposure**  
Full sun to part shade

**Bloom Color**  
Red

Once thought to be extinct, Big Red Sage is now commonly available from native plant nurseries. However, there are very few known colonies in the wild, because the plant is eaten by deer.

Big Red Sage grows in a variety of well-drained soils, including caliche. For most of the year, it consists of a rosette of large, glossy leaves. The 3-6 foot flower spikes bloom throughout the heat of the summer and are a favorite for hummingbirds. Once established, the plant readily reseeds and is easily propagated.



*Lindheimera texana*: Texas Star

Donna Snow Robinson  
Hill Country Master Naturalist  
Newsletter Editor  
431 Timber Ridge  
Kerrville, TX 78028