



Soils at Oso Bay Wetlands  
Preserve and  
Hans & Pat Suter Wildlife  
Refuge

Jon Brandt, P.G.

11 Nov 2021

# Review:

## Soil Orders in South Texas

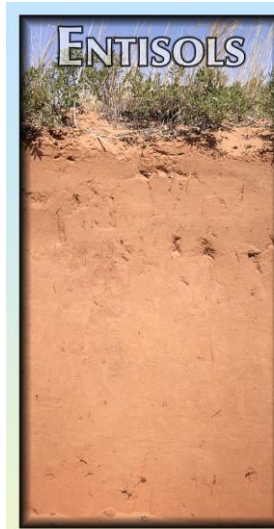
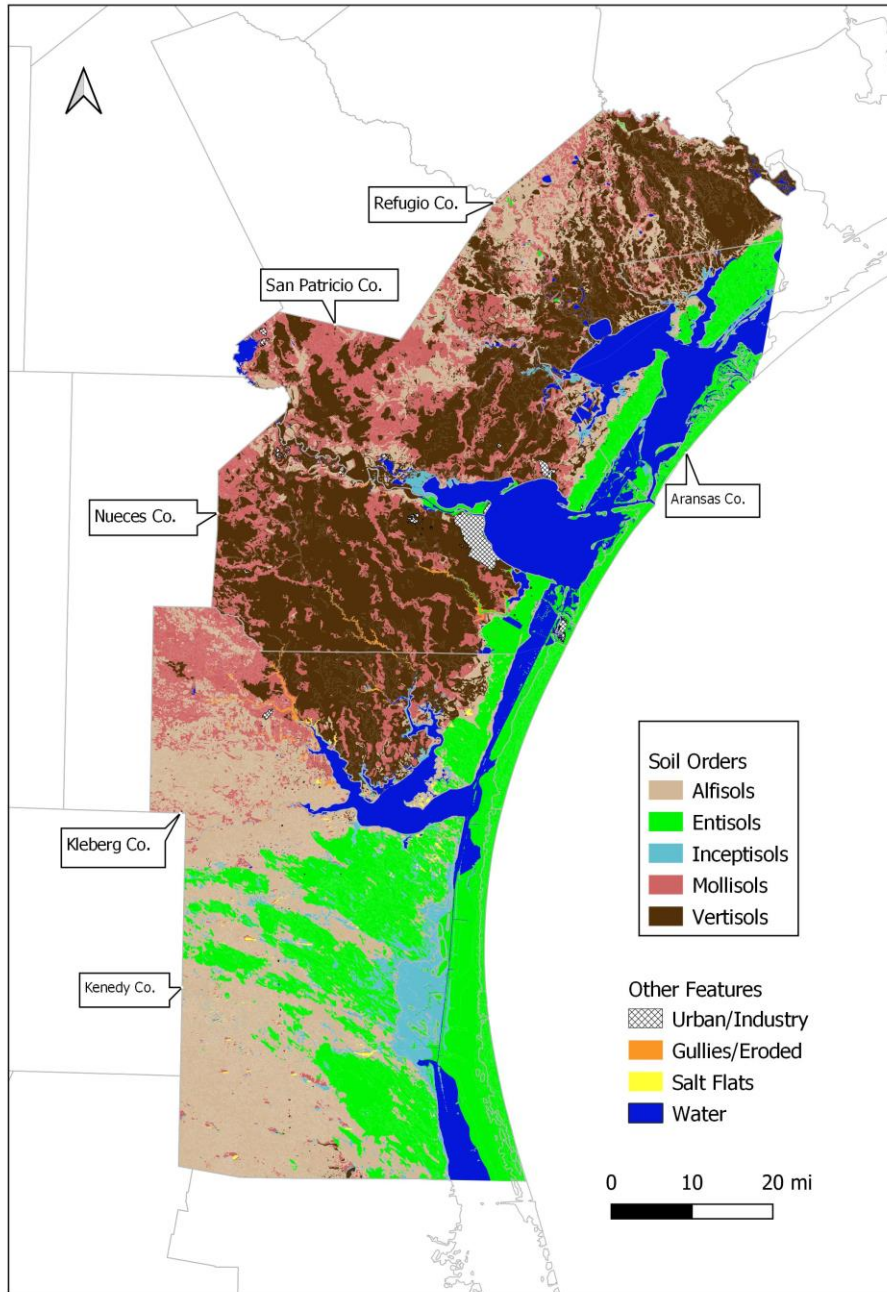
Alfisols (**Al** & **Fe**) – clay enriched subsoil

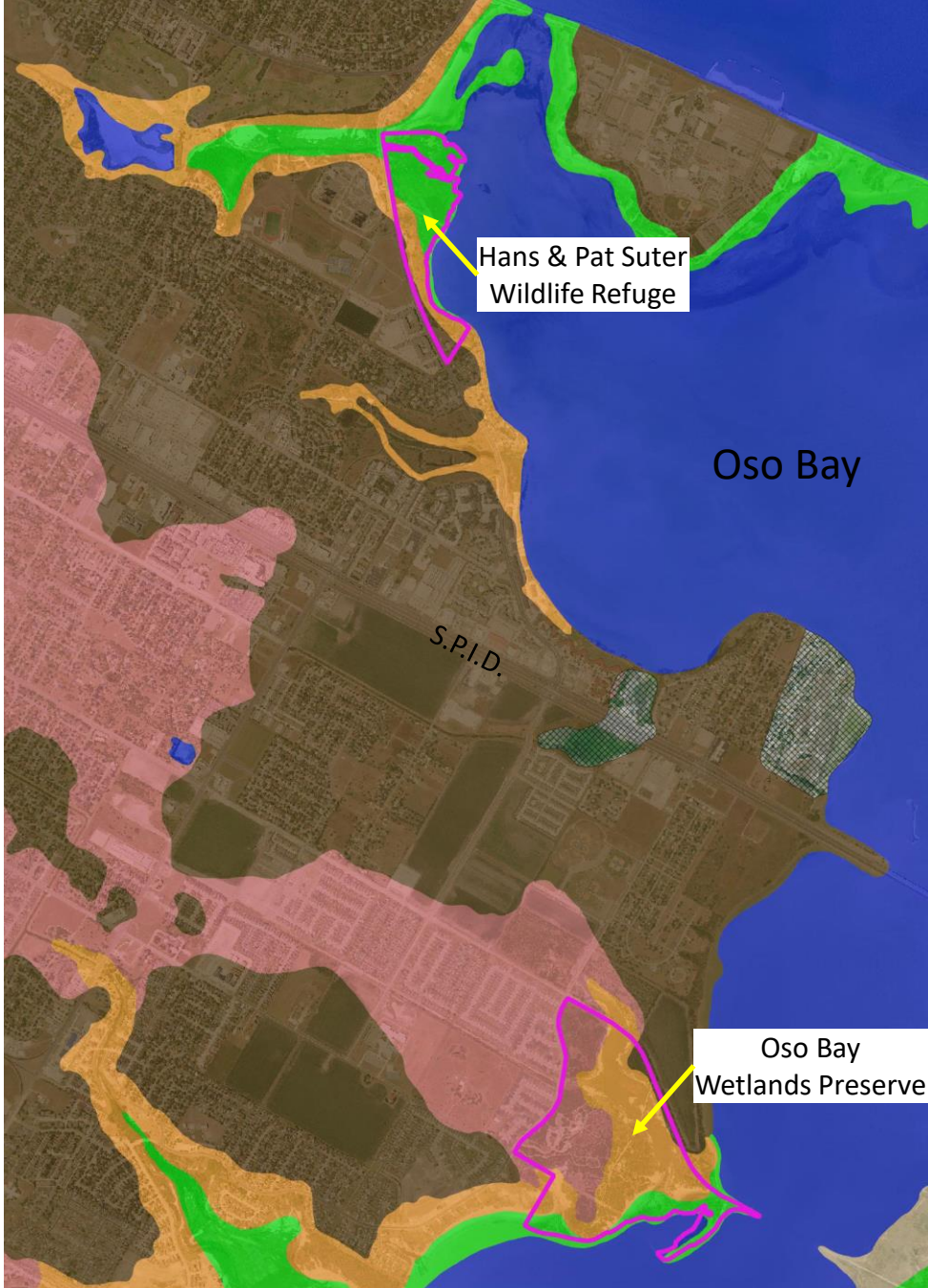
Entisols (**Recent**) – unaltered parent material, no diagnostic horizons

Inceptisols (Latin: **Inceptum**, beginning) – some alteration of parent material

Mollisols (Latin: **Mollis**, soft) – “prairie soils”, dark

Vertisols (Latin: **Verto**, turn) – clayey, shrink/swell





Hans & Pat Suter  
Wildlife Refuge

Oso Bay

S.P.I.D.

Oso Bay  
Wetlands Preserve

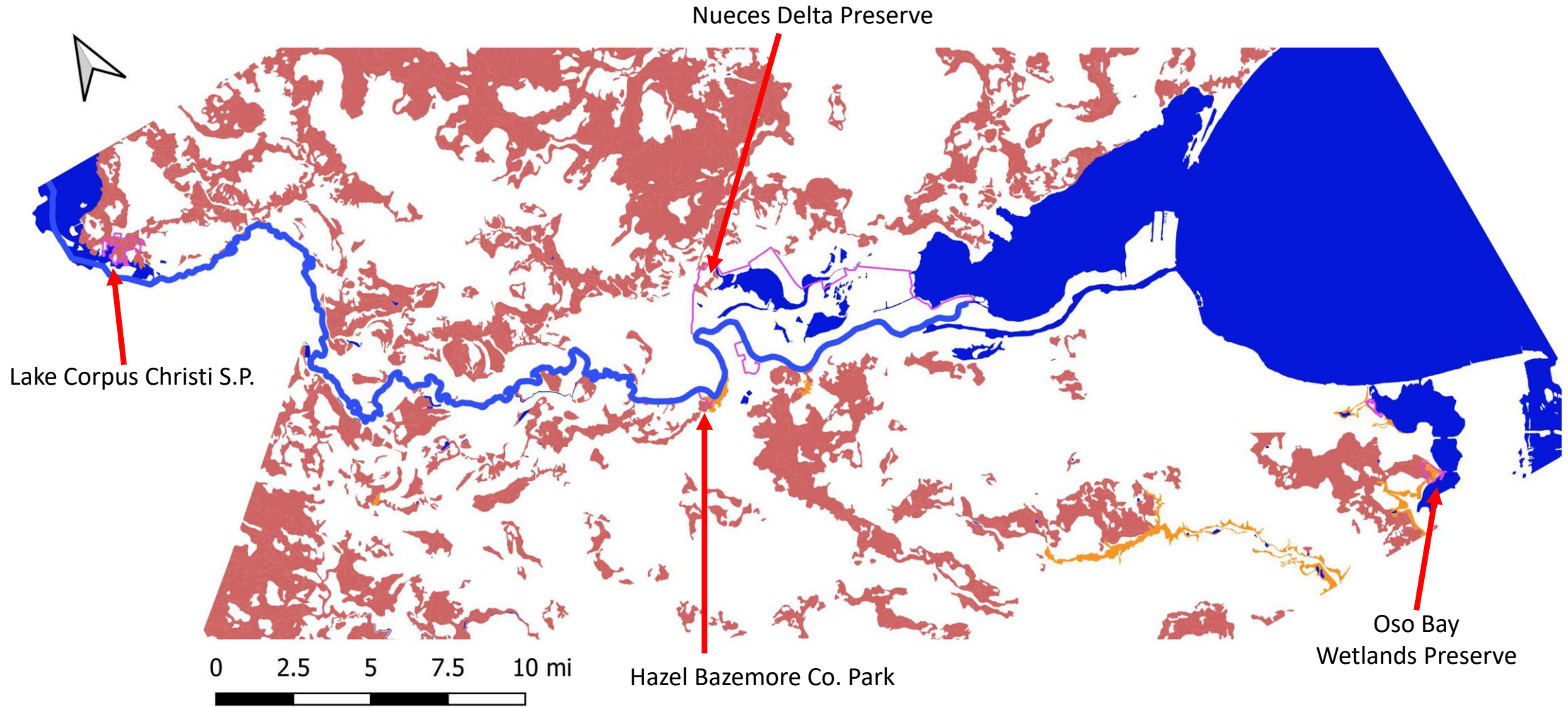
- Soil Orders
- Alfisols
  - Entisols
  - Inceptisols
  - Mollisols
  - Vertisols
- 
- Gullies/Eroded
  - Urban/Industry
  - Water
  - Site Boundary

Based on USDA-NRCS, SSURGO database for Nueces Co., published 11 June 2020

0 1000 2000 3000 4000 5000 ft

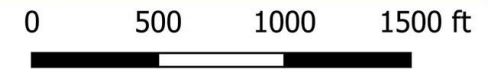
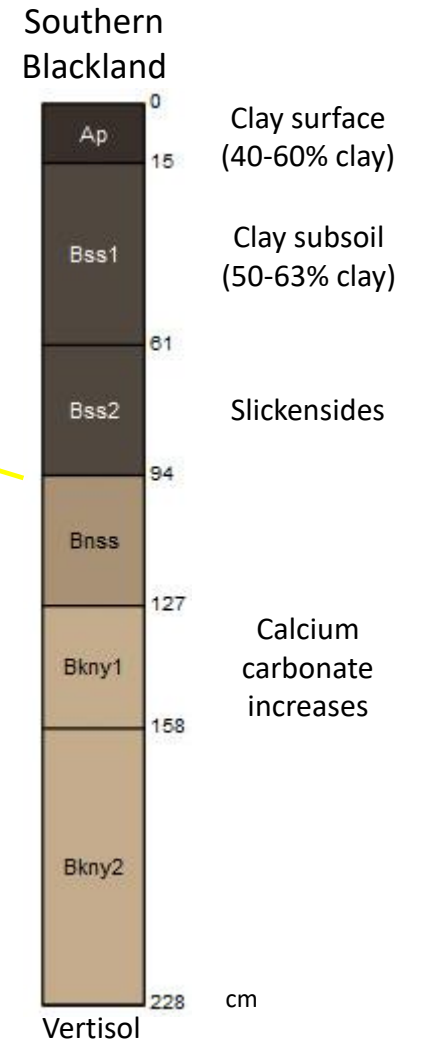
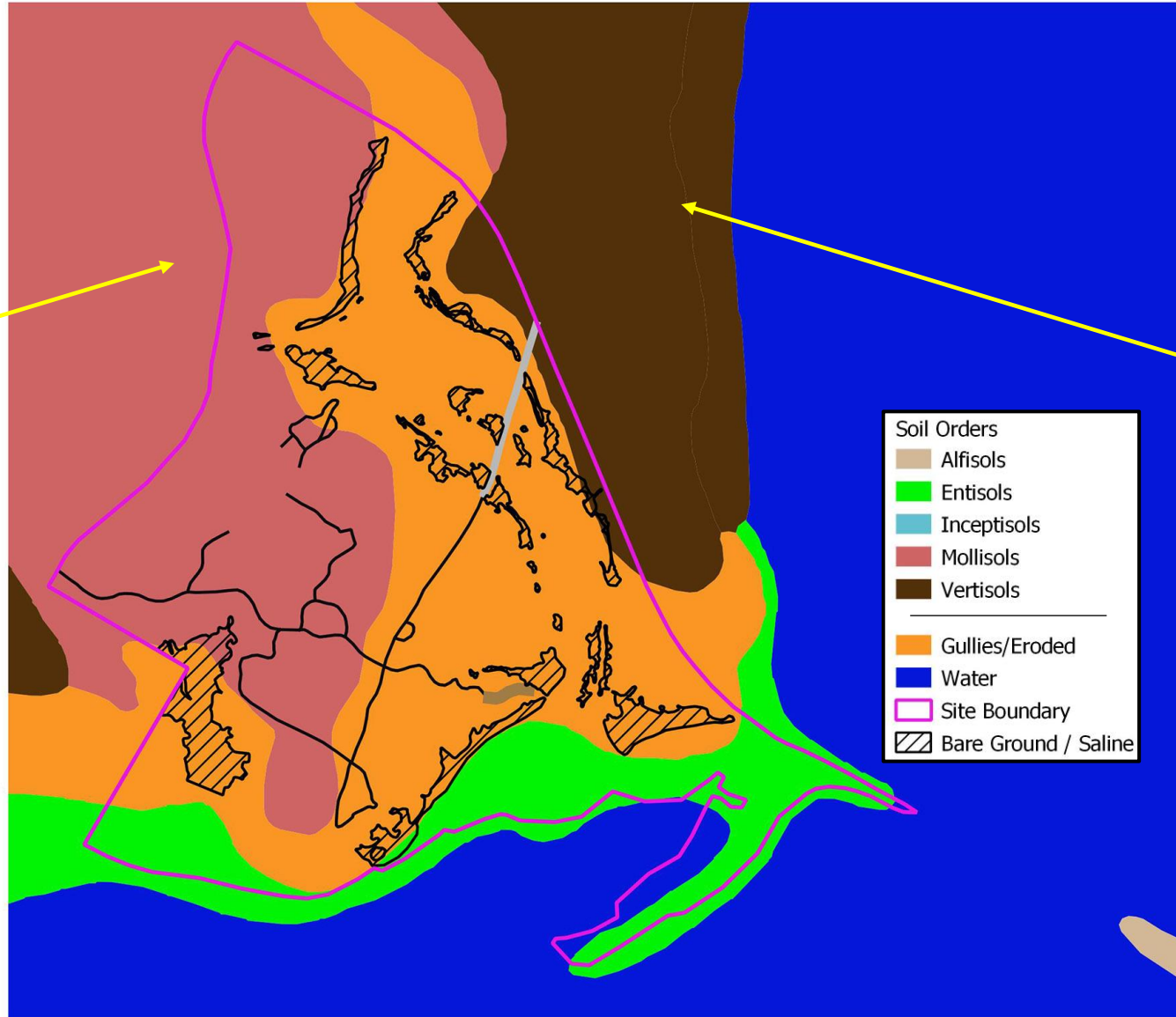
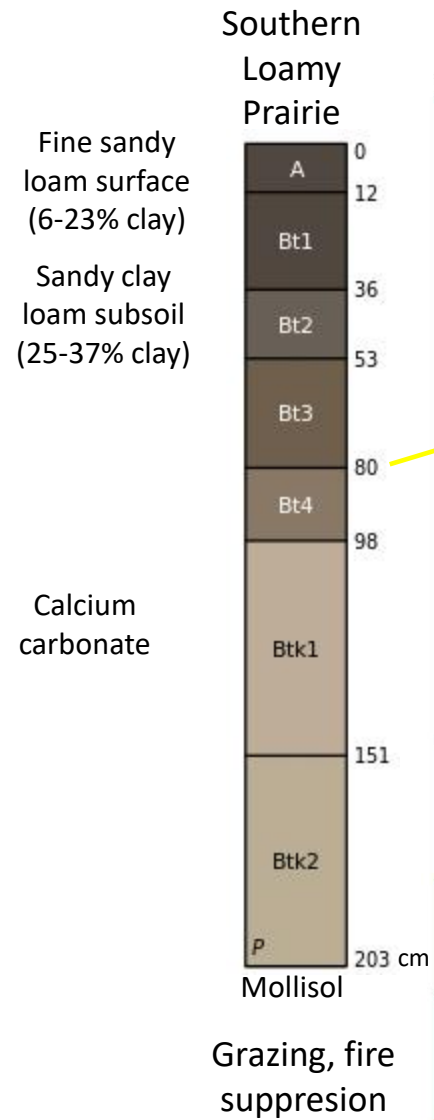


# Distribution of Mollisols



Based on USDA-NRCS, SSURGO  
database for Nueces Co., published 11  
June 2020

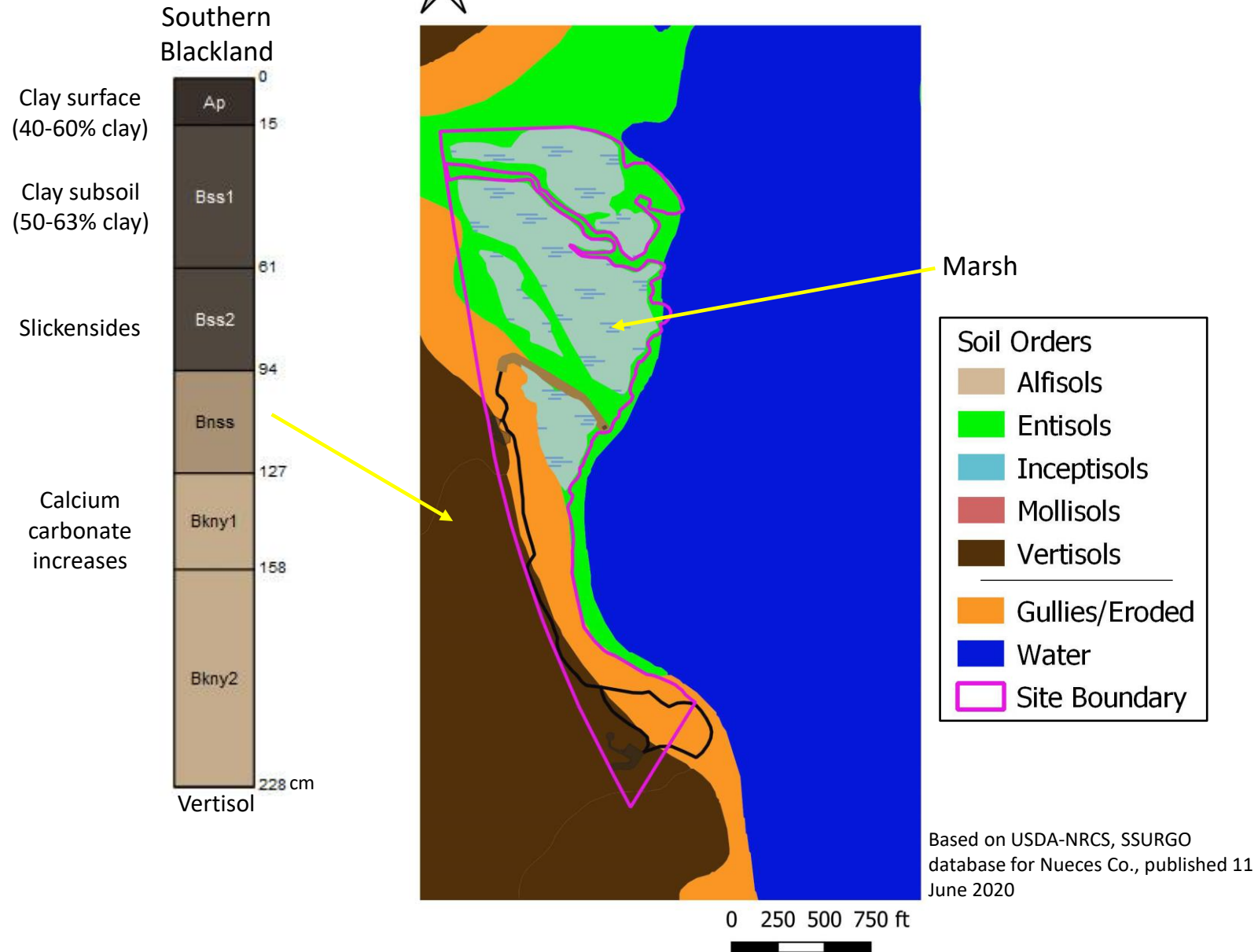
# Oso Bay Wetlands Preserve



Based on USDA-NRCS, SSURGO database for Nueces Co., published 11 June 2020



# Hans & Pat Suter Wildlife Refuge





0 250 500 750 ft

